

The background of the entire image is a photograph of a blue, textured wall with a repeating diagonal ribbed pattern. A rectangular window is set into the wall, showing a view of a green lawn, a blue fence, and some trees. The floor in the foreground is made of blue and white square tiles.

**THE ALBERT AND TINA**

**SMALL  
CENTER**

**FOR COLLABORATIVE DESIGN**

**2018-2019 ANNUAL REPORT**

***EACH OF US  
SHOULD BE  
EMPOWERED  
TO SHAPE THE  
PLACES WE  
LIVE, WORK  
AND PLAY...***





In 2019, Parisite Skatepark was selected as a Rudy Bruner Award for Urban Excellence Silver Medalist!





**ANN YOACHIM**  
DIRECTOR. PROFESSOR OF PRACTICE  
PUBLIC HEALTH // ENVIRONMENT

# DIRECTOR'S LETTER

I am thrilled to share the 2018-2019 work of the Albert and Tina Small Center for Collaborative Design. The redesign of the annual report reflects our belief in the importance of sharing the “how” and “why” we do our work. Throughout the report, you will see the Center’s commitment to an engaged design process as a means for capacity and coalition building to address inequity and injustice in the built environment. This, along with our responsibility to train the next generation of designers to understand that each of us should be empowered to shape the places we live, work and play, underpins all we do.

We are excited to share that in March 2019, we hired Jose Cotto as Collaborative Project Manager. Jose was a 2013 Small Center public interest design summer fellow, participated in design/build studios while a Tulane School of Architecture student and has taught our public interest design seminar as an adjunct faculty member. Prior to joining the Small Center, Jose worked at the Arts Council of New Orleans where he managed a youth design build program. He brings this experience, graphic design skills, and his photographer’s eye to the Center. Jose will build on the excellent work of our long-term public program manager, Sue Mobley who left the Center to co-lead Colloqate Design, a multidisciplinary non-profit design justice practice.

In the new year, you will see a reimagining of our front space with a focus on embracing its’ history as a storefront, “DEPART—MENT” will be a launching pad connecting design + academia, community + civic organizations, and visual + performance art to create a nexus for new ideas, coalitions, collaborations and action on issues related to the built environment. The Center will also continue to expand our commitment to research and explore new program directions, looking for publication, grant opportunities and community partnerships that expand our reach in New Orleans and beyond.

The Small Center’s current and future work is only possible with the generosity of supporters, dedication and talent of our collaborators, and committed students. Let this be an invitation to get more involved with the Small Center in the coming year. Make a financial investment. Join our mailing list to receive our quarterly newsletter. Stay connected by following us on Instagram and Facebook. Visit one of our projects. Attend a public program. Submit to our Request for Proposals process. Share your ideas with us and spread the word about our work to others. Volunteer your expertise. Together, we will expand knowledge on the built environment and create cities shaped by residents.





**RASHIDAH WILLIAMS**  
**ASSISTANT DIRECTOR**  
ARCHITECTURE // COMMUNITY ENGAGEMENT



**EMILIE TAYLOR WELTY**  
**ASSISTANT DIRECTOR, DESIGN + BUILD**  
ARCHITECTURE // CONSTRUCTION



**NICK JENISCH**  
**PROJECT MANAGER**  
ARCHITECTURE // URBAN PLANNING



**DONN PEABODY**  
**OPERATIONS COORDINATOR**  
ACCOUNTING // EVENT MANAGEMENT

**IN MEMORIAM**

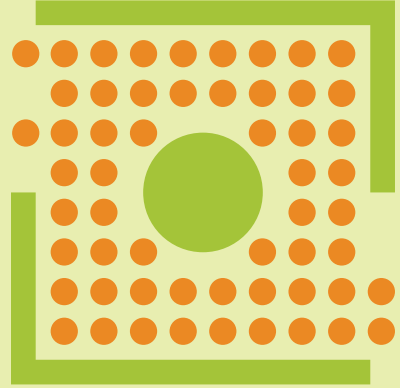
# OUR STAFF



**JOSE COTTO**  
**PROJECT MANAGER**  
ARCHITECTURE // VISUAL ARTS



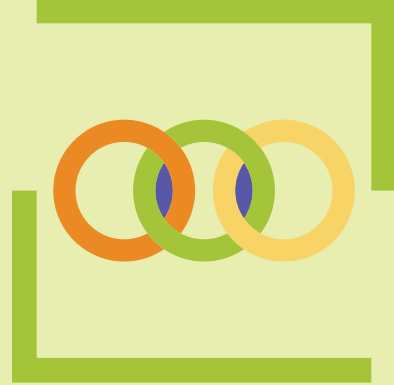
OUR DESIGN PRACTICE STEMS FROM THESE  
INFORMS OUR WORK. COLLECTIVELY, THEY



WELCOME COMMUNITY

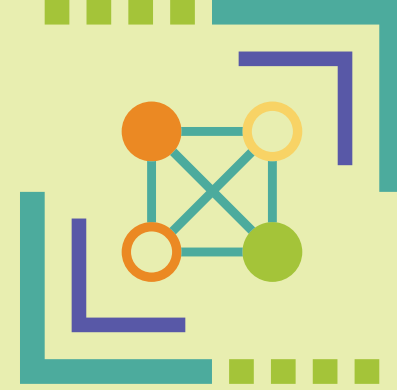


MAKE SPACE

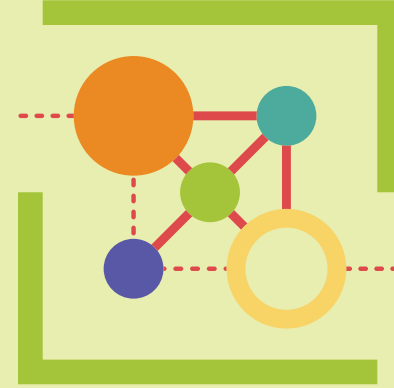


EXPLORE LINKS

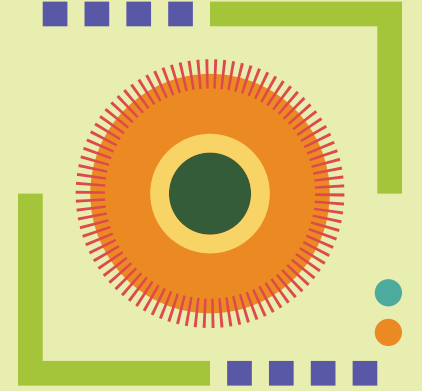
CORE VALUES. INDIVIDUALLY, EACH VALUE  
PROVIDE A ROADMAP THAT GUIDES IT.



CULTIVATE KNOWLEDGE

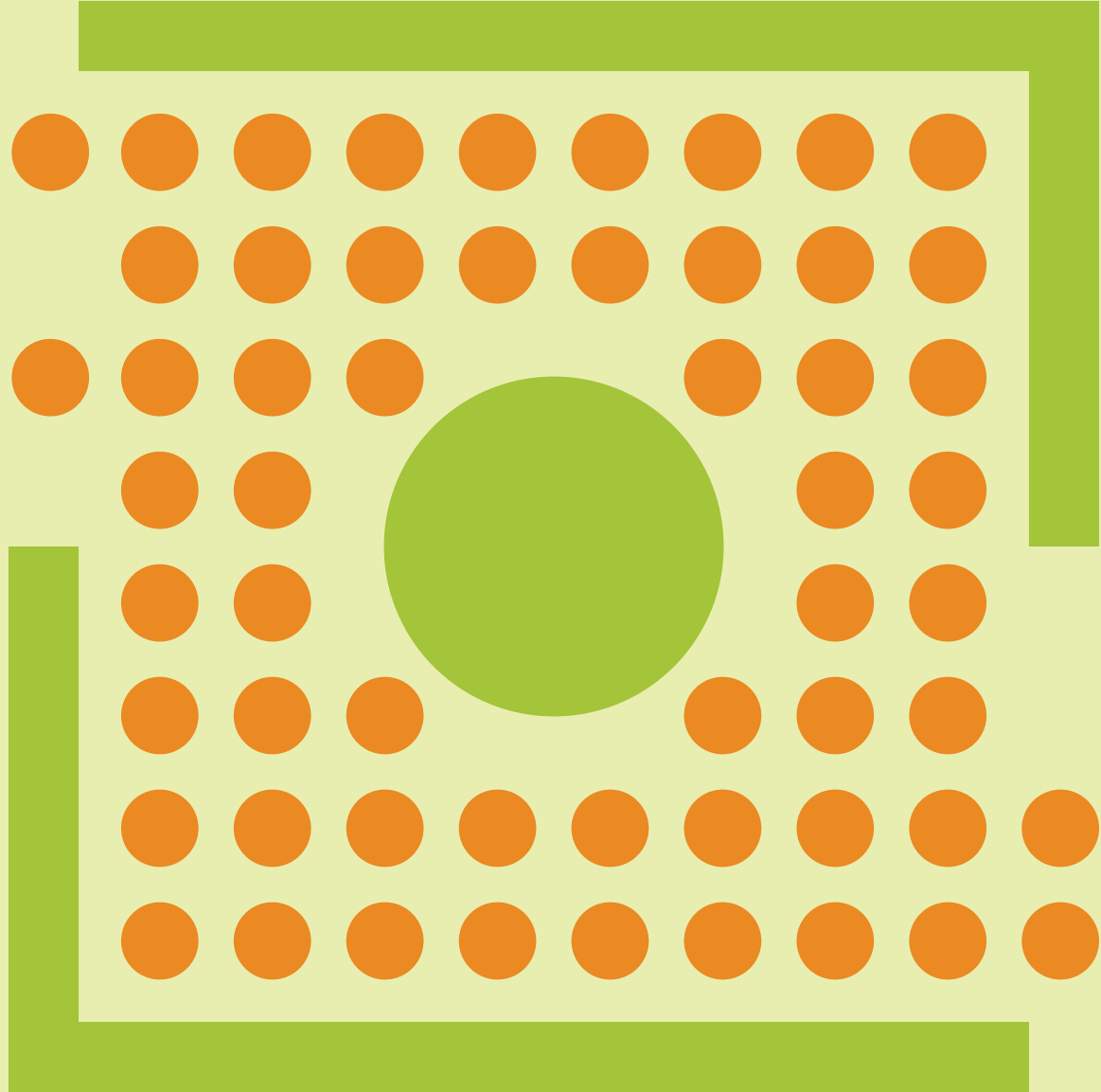


BUILD NETWORKS



VISION FUTURES





## WELCOME COMMUNITY

The Small Center is a space for community to gather around a shared belief that **design should be leveraged as a tool in the fight for justice and equity.**

We believe that **every resident of New Orleans has the right** to be part of the conversations that shape our built environments.<sup>1</sup>

**What are the borders and openings that define our community?**

<sup>1</sup> Every year, we put out a RFP for projects that our staff and students will focus on for the academic year. Read more about this process and why we think it matters at [small.tulane.edu](http://small.tulane.edu).

**WHAT CONVERSATIONS ARE TAKING PLACE IN THE COMMUNITY THAT YOU BELIEVE WE SHOULD BE A PART OF?**



## MAKE SPACE

Public Interest Design is about **making space together**.

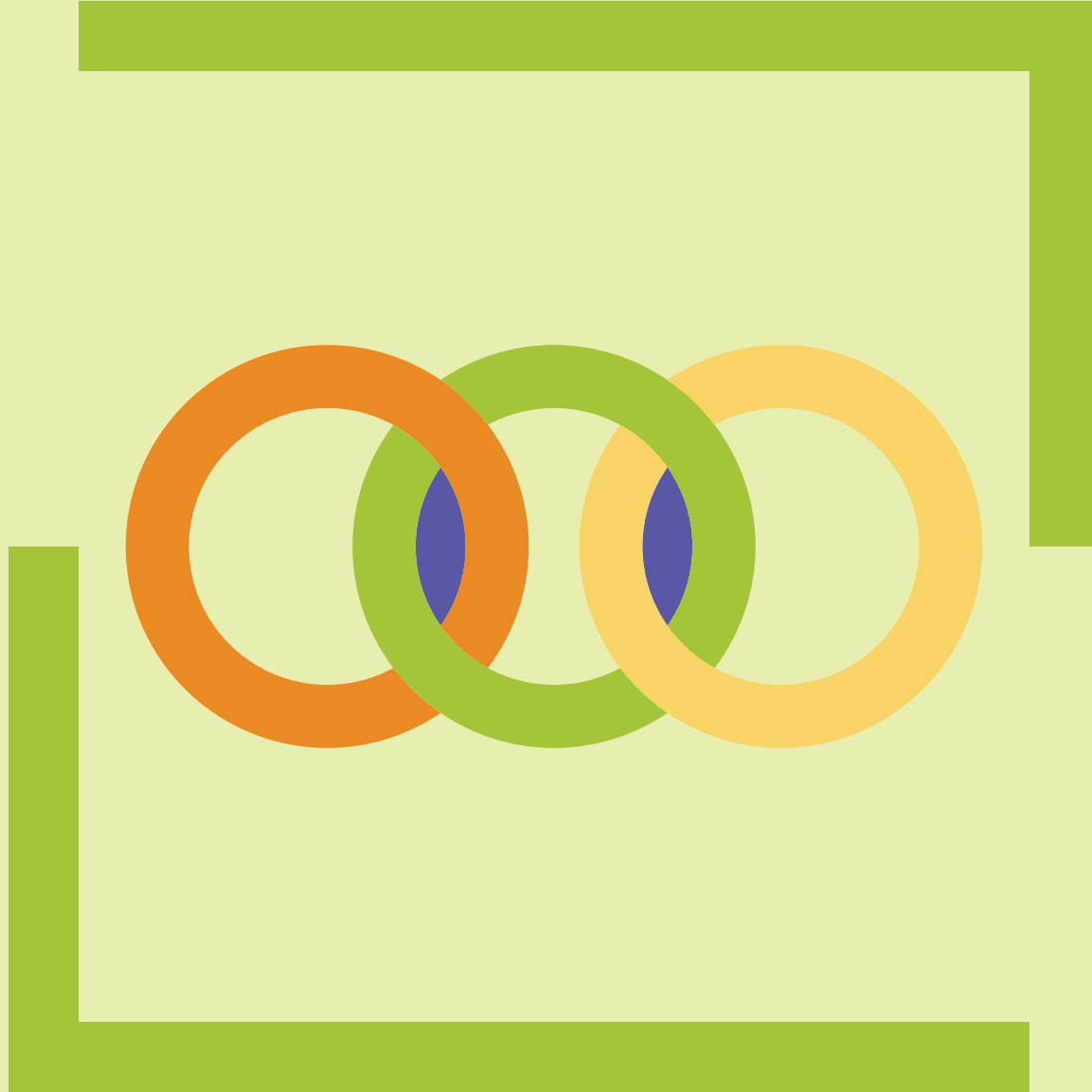
Including multiple perspectives while creating a vision is not just a benefit, it is **a requirement for our work to move forward**.

**What perspectives are and should be informing the design of space?**



**WHAT IS NEEDED TO ENSURE MORE PEOPLE ARE INCLUDED AT THE TABLES WHERE DESIGN DECISIONS THAT AFFECT US ALL ARE BEING MADE?**





## EXPLORE LINKS

We believe it's important to honor and celebrate the work of those **that came before us and to identify and support** those who want to carry it forward.

Past projects, experience, and research should serve as **anchors and bridges that provide perspective and inspire** new ways of knowing and doing.

**Where do ideas and solutions that move us beyond what we see and know emerge?**

**WHAT TOPICS OR QUESTIONS WOULD YOU LIKE TO SEE US EXPLORE THROUGH OUR WORK?**



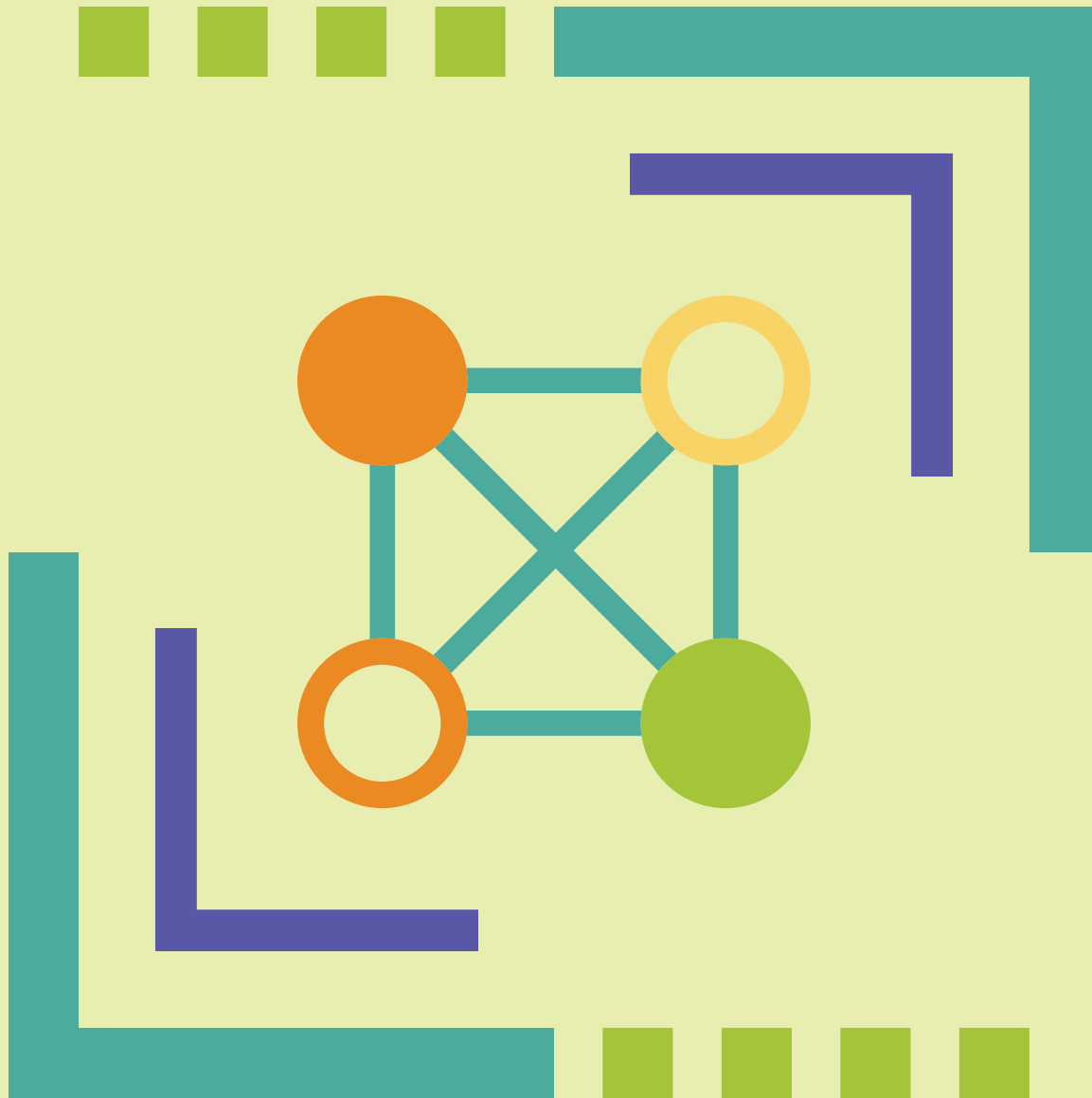
## CULTIVATE KNOWLEDGE

Cultivating and sharing knowledge is at the core of our work. **We recognize knowledge can be expressed in many ways and exists beyond our scope of view.**

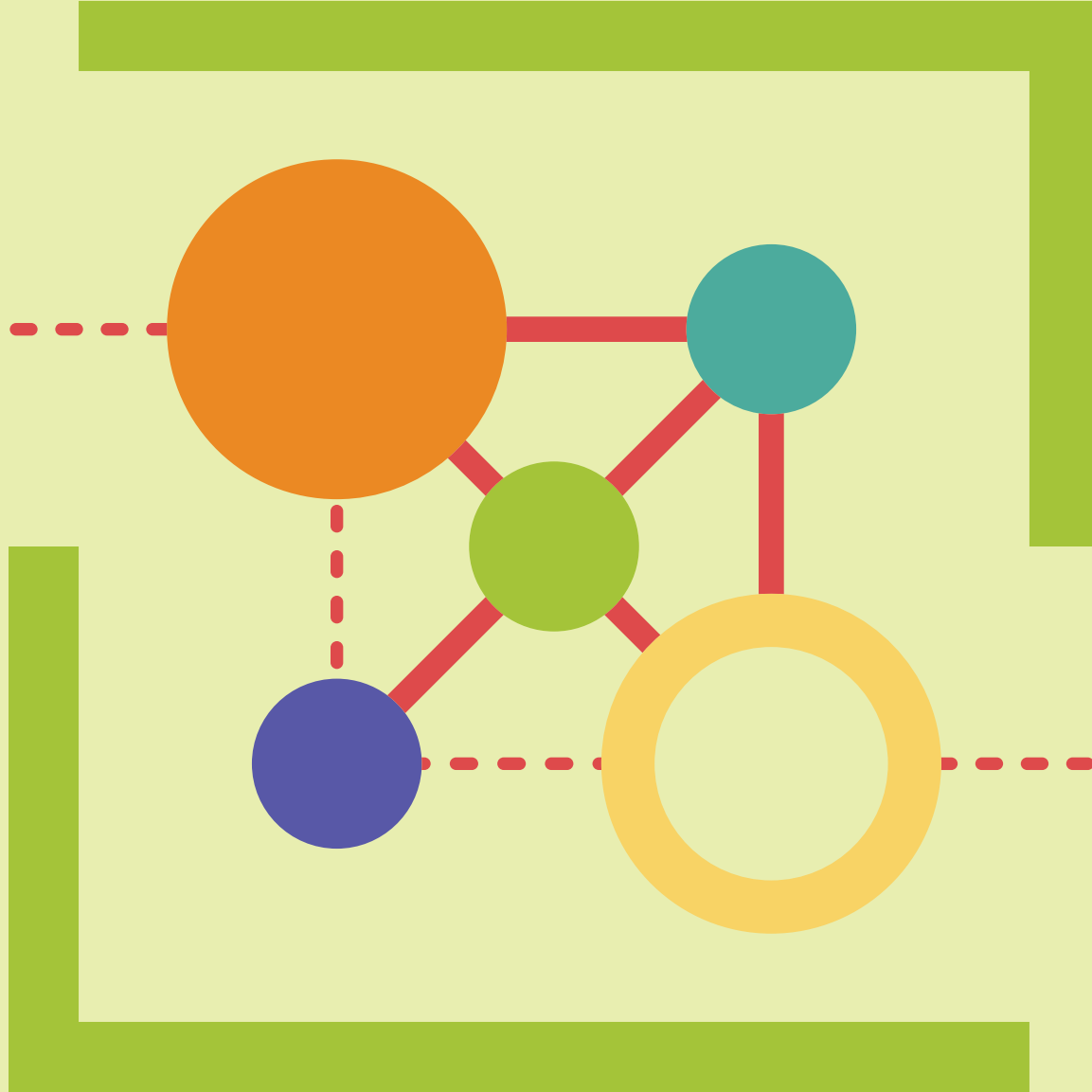
**We aim to create space where moments of exchange offer opportunities to find common ground and produce new knowledge.**

**How can we amplify our collective knowledge within and beyond the spaces we occupy?**

**WHAT WOULD YOU LIKE TO KNOW ABOUT THE BUILT ENVIRONMENT  
AND HOW CAN WE BEST SHARE THAT KNOWLEDGE WITH YOU?**







## BUILD NETWORKS

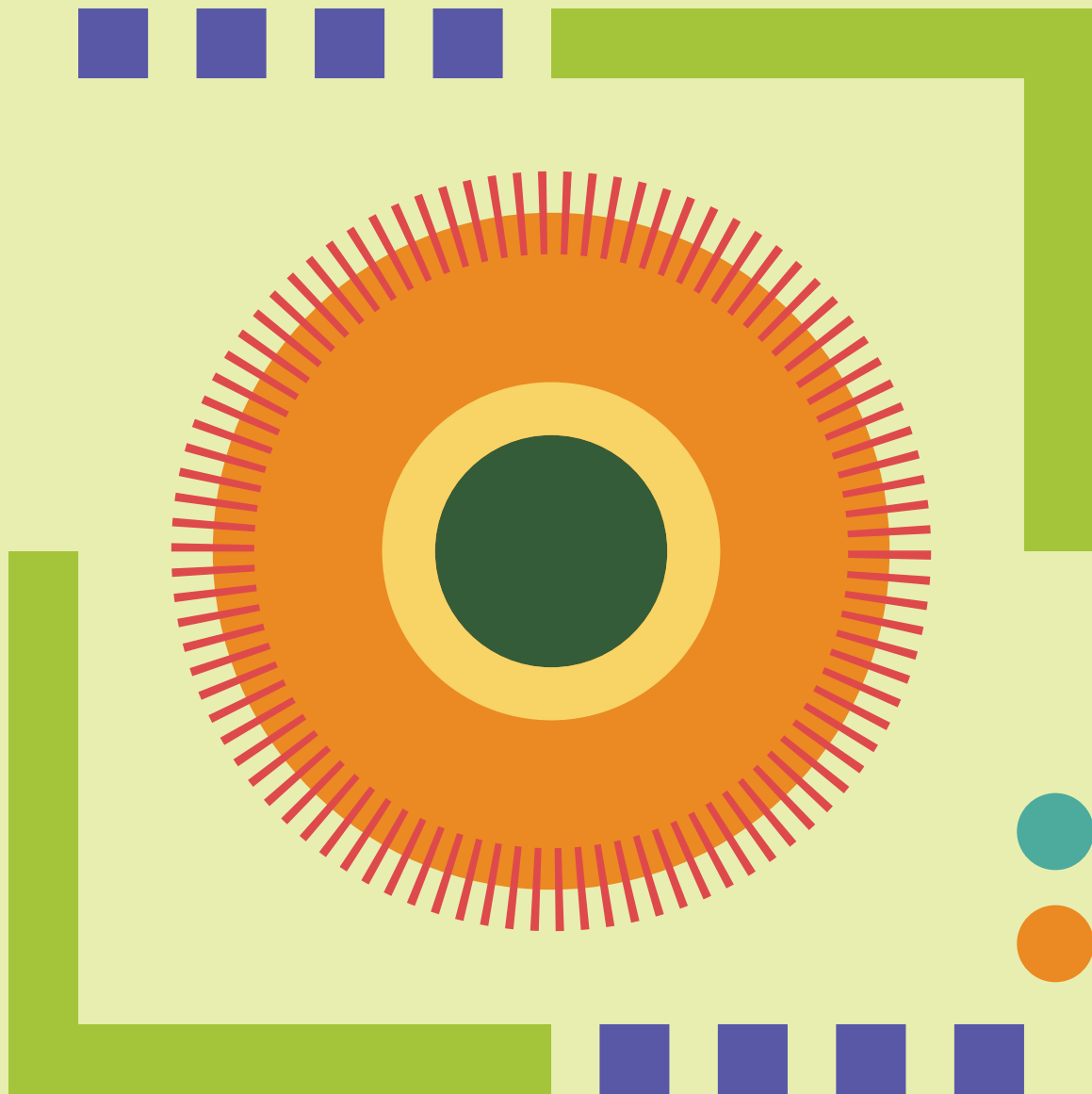
Part of our role is to serve as a conduit between **partners, resources, and possibilities**. We do this by zooming out and leaning on the skill sets of our interdisciplinary team and partners.

Building networks that center intentional collaboration means **all entities contribute and benefit**.

**How might we leverage these networks to expand and grow ourselves and our work?**

**IF YOU BELIEVE WE CAN WORK TOGETHER, DROP US A LINE OR COME BY OUR OFFICE FOR COFFEE OR TEA!**





## VISION FUTURES

**We work collaboratively to ensure broad participation in the development of a collective vision.**

**Working together to envision a project allows for big ideas to be tested against real needs and obstacles.**

**Let's imagine a world where our vision has been actualized; what's our next step?**

**DO YOU HAVE A VISION FOR A BETTER NEW ORLEANS? A BETTER WORLD?  
HOW CAN WE BE HELPFUL IN DEVELOPING IT FURTHER?**



# GROUNDWORK EARTH LAB

ENVIRONMENTAL EDUCATION  
WATER LITERACY

FALL 2018

The Small Center project team worked with Groundwork to understand its day-to-day use of the site, desired improvements and additions, and organizational aspirations. Undertaking a series of material studies, the team generated a wide range of design options, engaging Groundwork leadership, board members, staff, Green Team and Ground CREW participants to select a final design solution.

The team constructed a new fence and gateway entrance, collaborated with Groundwork students to build new planter beds and a compost area, and reorganized site layout to optimize use of the L-shaped lot. Working with a custom dyed and layered concrete system developed in the first half of the semester, the primary structure forms an “outdoor room” suitable for gatherings large and small.

In Spring 2019, new outdoor furniture and educational signage explaining the site’s central bioswale and planting/compost functions were built to complete the project.

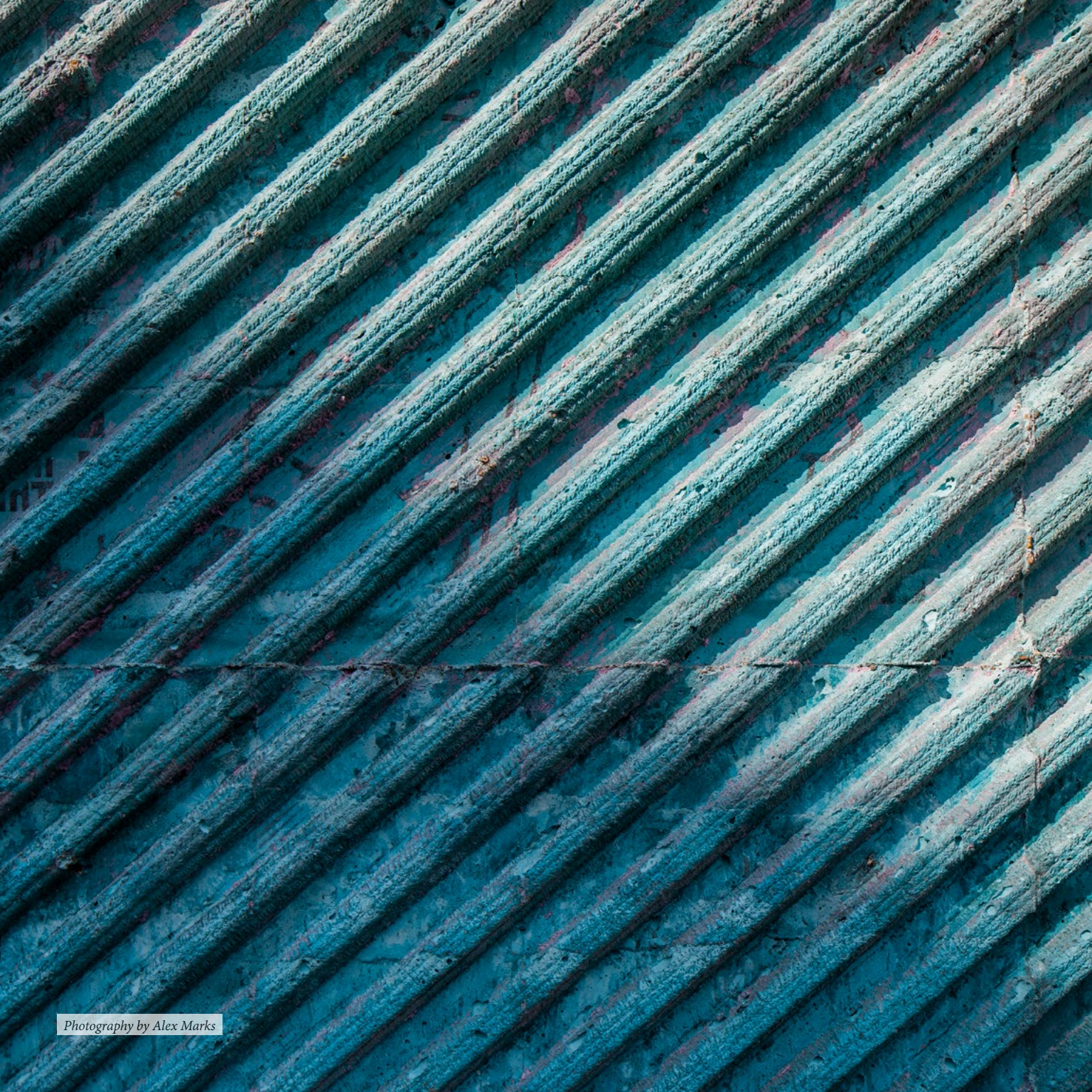




top: paver studies  
bottom: concrete studies  
opposite: stain studies







Photography by Alex Marks

## PARTNER

From installing raingardens to improving urban drainage infrastructure, Groundwork New Orleans focuses on implementing projects that mitigate neighborhood stormwater threats and improve quality of life. At the core of this work is youth development. GWNO provides job and life skills training by hiring youth and adults to build and maintain these projects.



With the new additions to the Earth Lab, Groundwork will be able to hold events in a formalized “outdoor classroom” area. A new fence and colorful gateway provide a welcoming street presence allowing neighbors and visitors to see the Earth Lab space and understand its purpose. The project reinforces Groundwork’s intent to welcome its partners and the wider community to participate in its educational activities and programming.

## OUTCOME



Groundwork New Orleans' primary location on St. Claude Avenue was visually inaccessible due to high fencing. The built intervention opens up the site and gives a bold visual identity to Groundwork's programming — allowing the site to more effectively host school and volunteer groups for hands-on field trips and other activities.





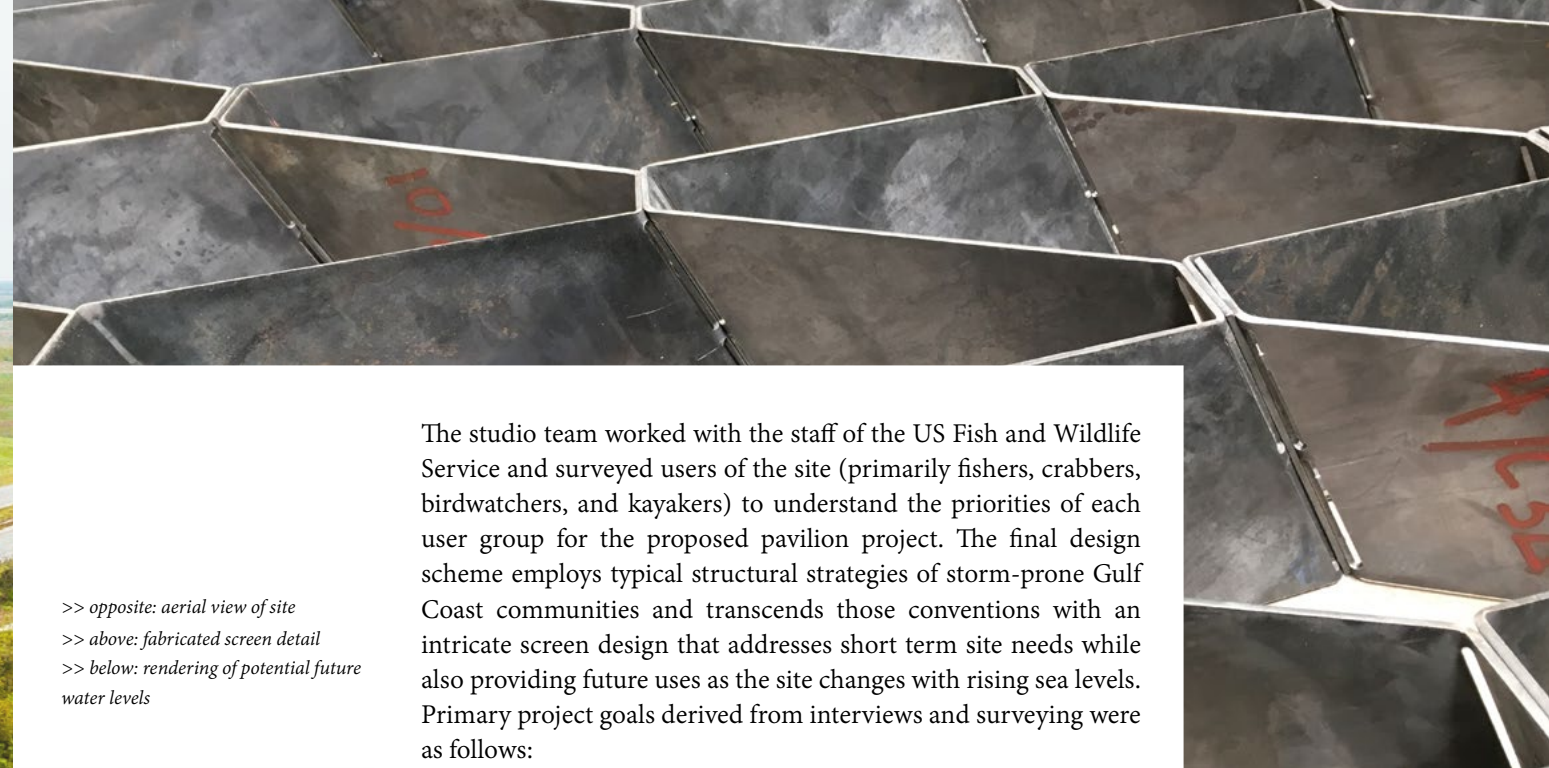
# OUTLOOK: BAYOU SAUVAGE COASTAL STUDIO

BIOLOGY + WATER

SPRING 2019



>> opposite: aerial view of site  
>> above: fabricated screen detail  
>> below: rendering of potential future  
water levels



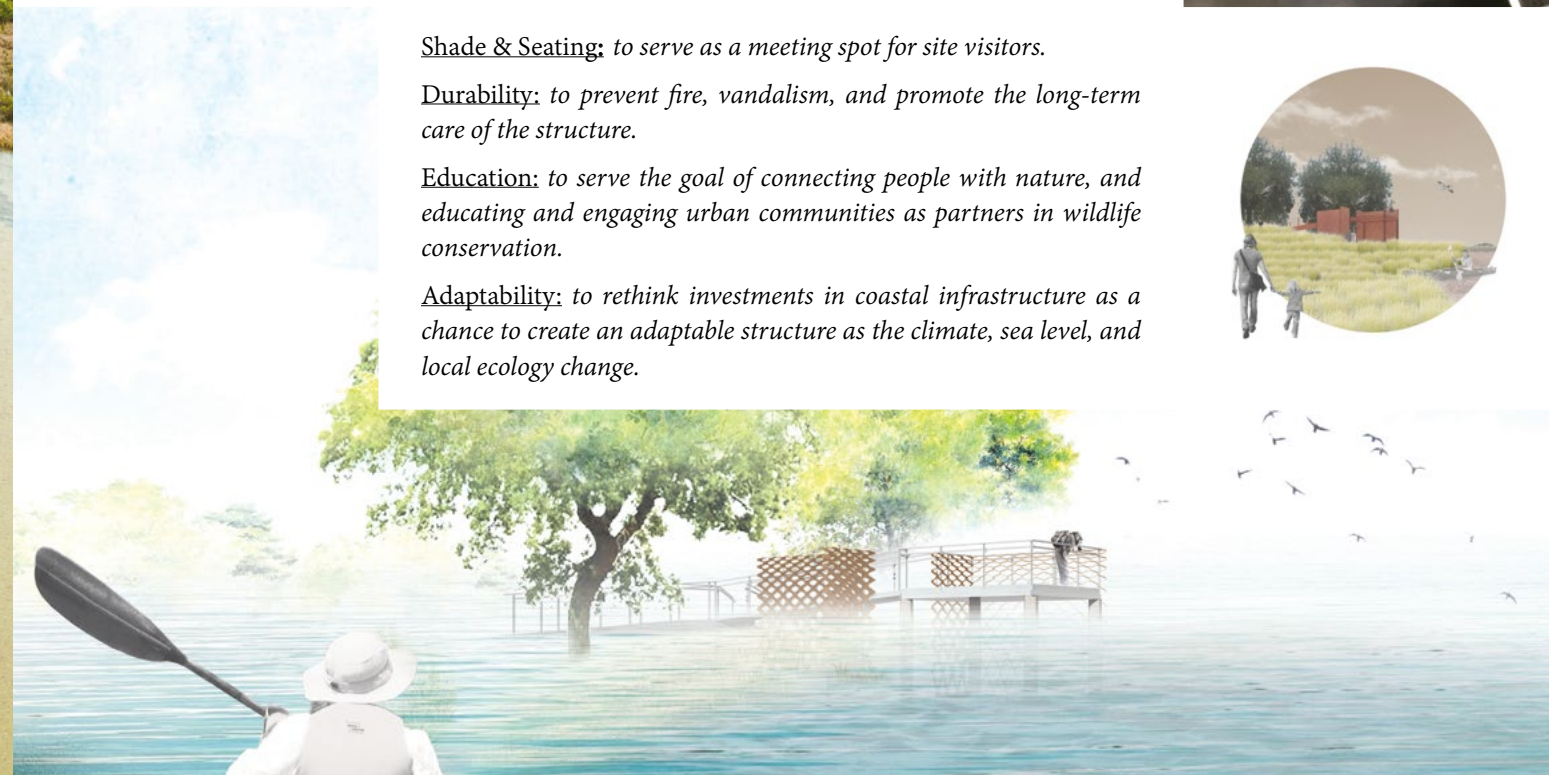
The studio team worked with the staff of the US Fish and Wildlife Service and surveyed users of the site (primarily fishers, crabbers, birdwatchers, and kayakers) to understand the priorities of each user group for the proposed pavilion project. The final design scheme employs typical structural strategies of storm-prone Gulf Coast communities and transcends those conventions with an intricate screen design that addresses short term site needs while also providing future uses as the site changes with rising sea levels. Primary project goals derived from interviews and surveying were as follows:

Shade & Seating: to serve as a meeting spot for site visitors.

Durability: to prevent fire, vandalism, and promote the long-term care of the structure.

Education: to serve the goal of connecting people with nature, and educating and engaging urban communities as partners in wildlife conservation.

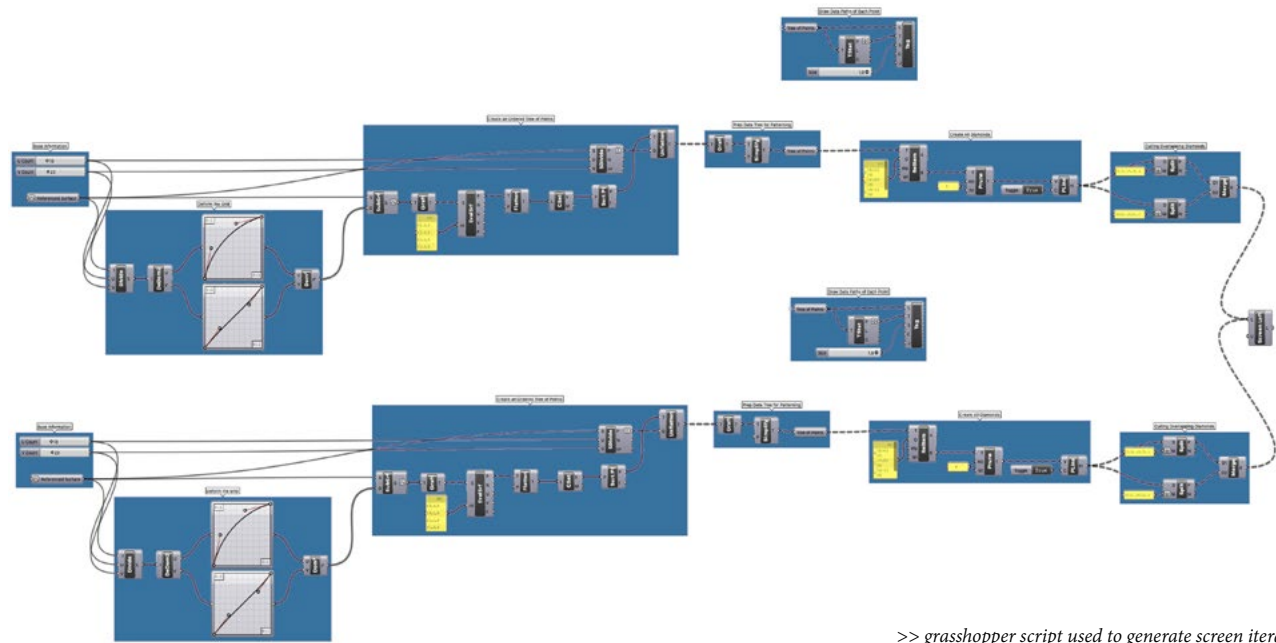
Adaptability: to rethink investments in coastal infrastructure as a chance to create an adaptable structure as the climate, sea level, and local ecology change.



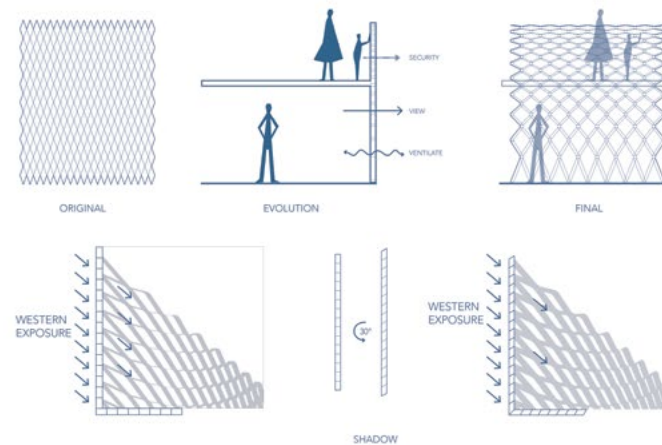








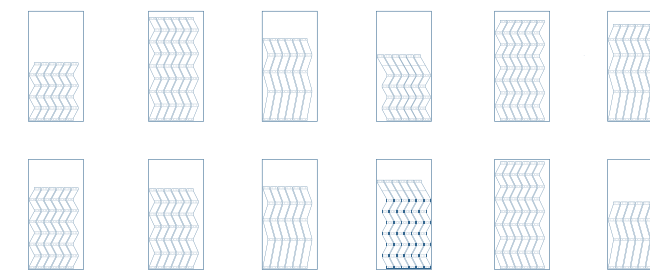
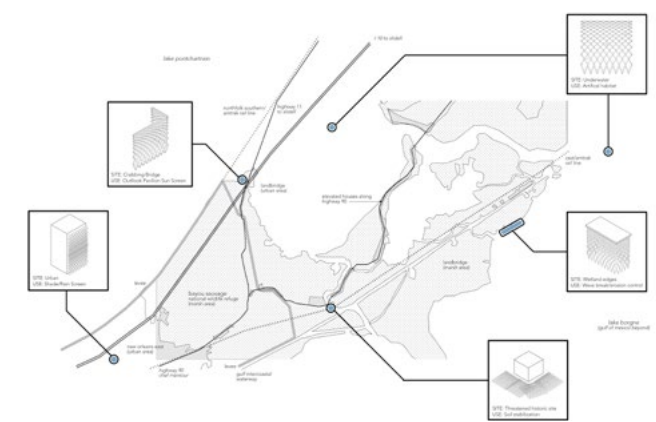
>> grasshopper script used to generate screen iterations



>> above: shadow studies of screen variations

>> top corner: adaption and implementation diagram for screen uses in others sites

>> right: cut sheets for plasma cutter and parts diagram for assembly



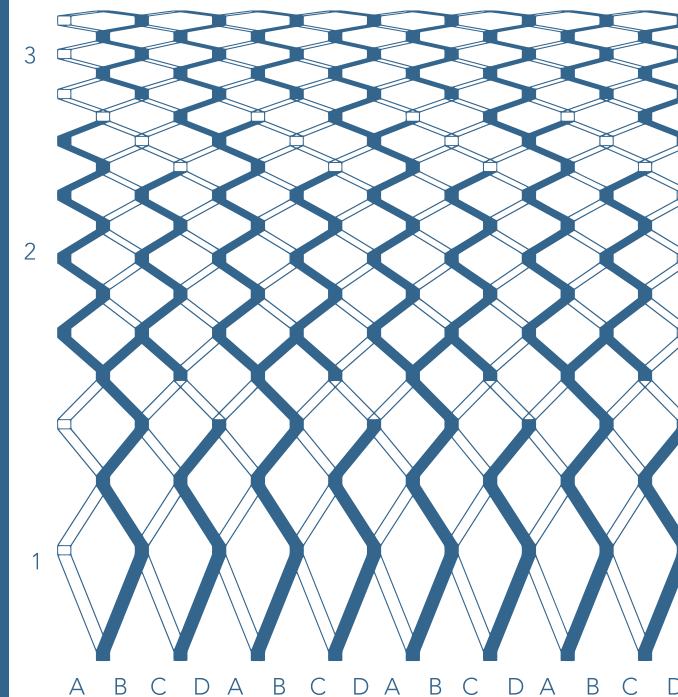
## HOW CAN TECHNOLOGY BE DEPLOYED AS PART OF AN EXPERIMENTAL AND INNOVATIVE RESPONSE TO A SITE AND THE BROADER RIPARIAN CHANGE CONTEXT?

CNC plasma cutting technology is an advanced manufacturing technology whose potential is still evolving. This project explored CNC plasma cutting and the use of sheet steel in coastal projects. In partnership with Workhaus, a local CNC Plasma cutting shop, the team investigated methods of cutting, folding and connecting steel to create complex, three dimensional and site responsive strategies to address programmatic needs. The primary functions of the screen were to serve as a shading device and beacon to draw visitors into the site and foster connections with the refuge.

COR-TENA606-4 weathering steel was chosen as the material to investigate due to its durability, non-combustible qualities and ability to survive harsh coastal landscapes. The material composition allows the steel to oxidize in the atmosphere forming a corrosion resistant layer which protects the steel in a coat of rust.



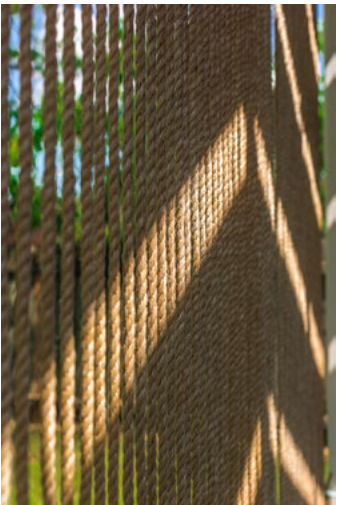
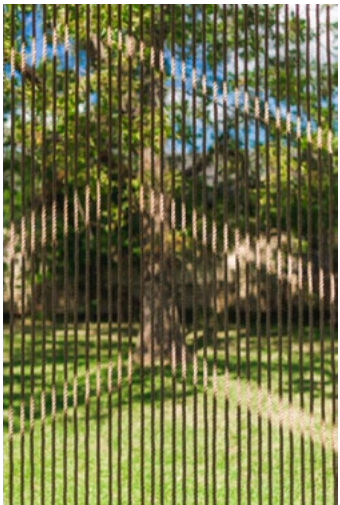
The screen design emerged from a series of paper and cardboard explorations that translated logics and objects discovered on-site into screen language. Source objects included palmetto leaves, crab nets, and ripples on the water's surface. While the primary function in the short term is for sun shading, the team researched artificial reefs and erosion control products. Incorporating those principals this steel screen system is designed to also act as a wave break and soil stabilizer as seas begin to rise and to create habitat for future underwater inhabitants in a long-term high sea-level future.











# THE FARMACIA WELLNESS HUB

FOOD + HEALTH

SUMMER 2019

The FARMacia Wellness Hub, a signature initiative of NewCorp, Inc's 7thWard Revitalization Project, aims to improve community health by providing a space for wellness focused activities and educational programming.

Our Public Interest Design Fellows developed a master plan for the nearly 7, 500 sq foot site and built the community gathering structure. Based on the needs and priorities identified by NewCorp and community stakeholders during design charrettes in Spring 2019, the master plan also includes a butterfly garden for children to play, bioswale to manage stormwater, storage structure for equipment and materials, and an additional pavilion for growing. The built community gathering structure incorporates the unique neighborhood street grid of "The Cut" into the front façade and uses woods and ropes on the side elevations to create a gradient that alludes to public, private nature of a shotgun house by situating open space in the front and more private and intimate spaces toward the back of the site.

>> opposite top: community pavilion  
 >> opposite below: details of rope screen and connections  
 >> right: FARMacia logo iterations







>> above: project masterplan

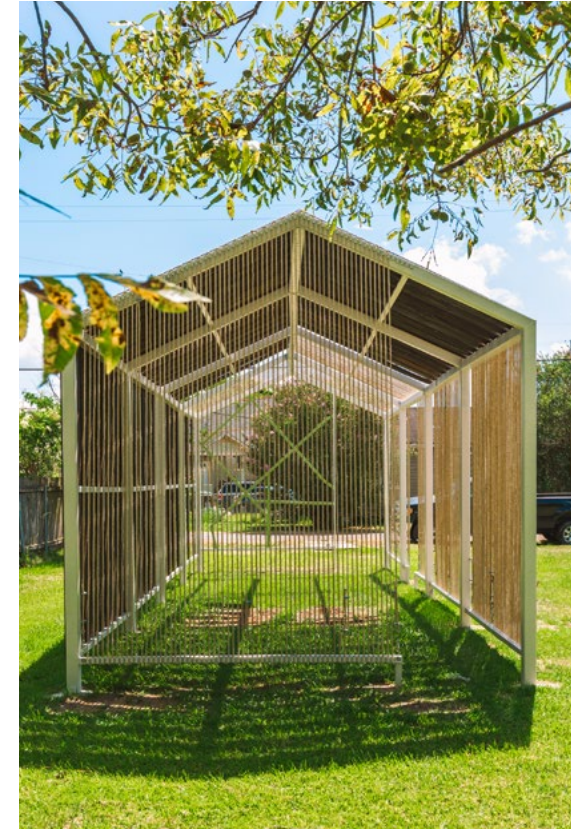
>> opposite: south elevation





## OUTCOME

The final design of the pavilion pays homage to the single shotgun and serves as a reminder that these lots once contained homes full of vibrant life and rich history — Dr. Thelma Coffey-Boutte, the first Black woman to practice medicine in New Orleans resided here; making the desire to transform this site into a hub for community wellness that much richer.



>> above left: front elevation of gathering pavilion

>> above right: rear elevation of gathering pavilion

>> opposite: aerial photo highlighting the unique street grid of "The Cut"



# INTERNATIONAL HIGH SCHOOL

VISIONING PLAN

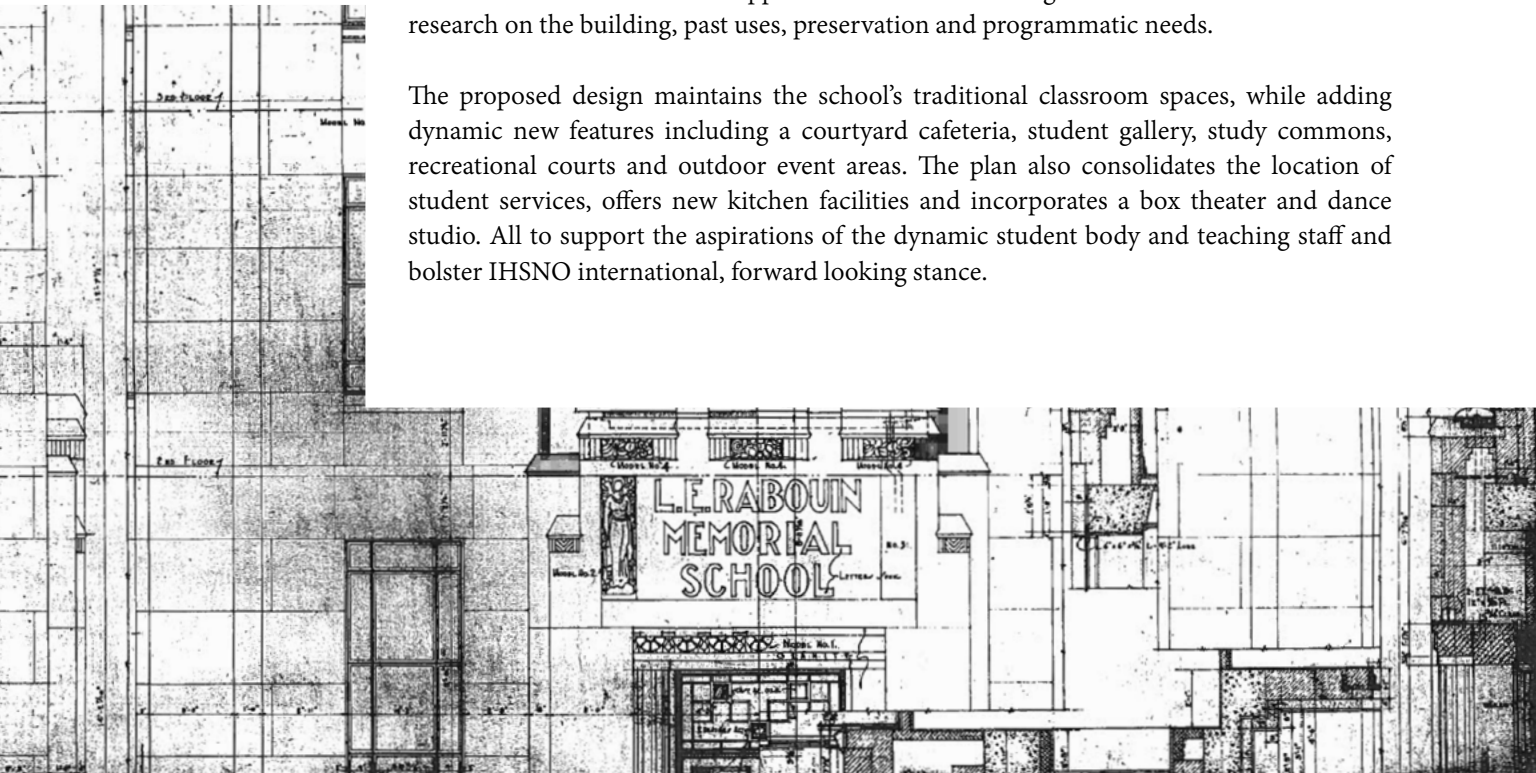
FALL 2018

The International High School (IHSNO) is the only school located in Downtown New Orleans. Its historic building requires a comprehensive renovation that responds to the modern needs of a high school and its diverse student body, including ADA accessibility, increased enrollment and dynamic teaching methods.

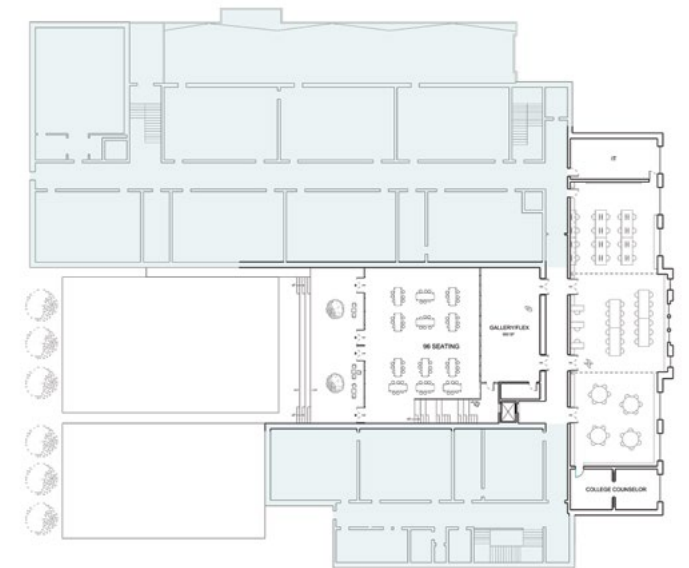
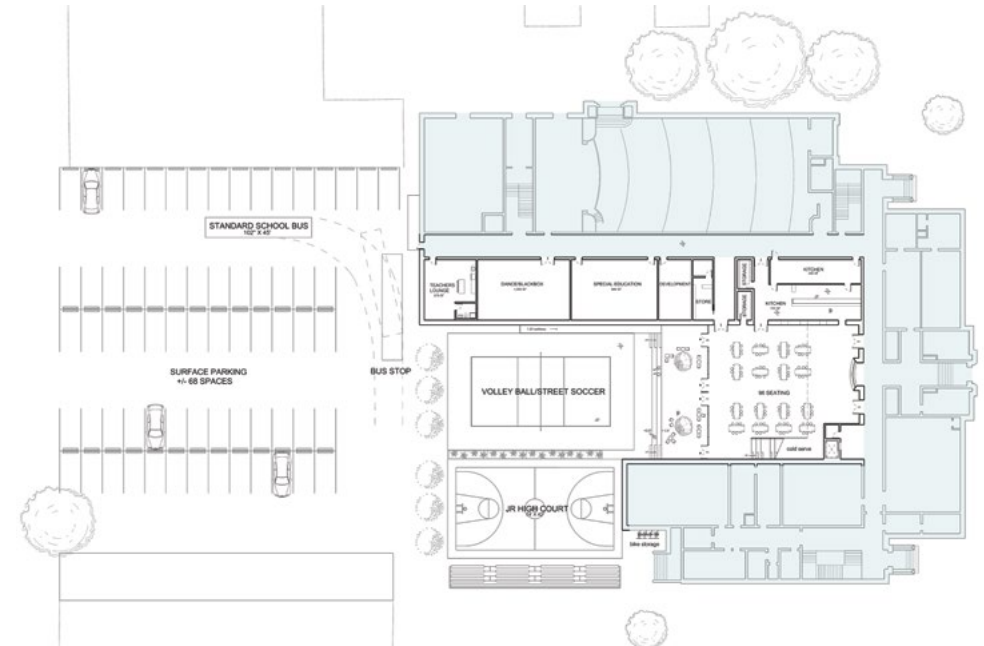
In collaboration with IHSNO leadership, staff, teachers, and students, the Small Center project team created a re-programming and schematic renovation plan for the high school's historic structure that will support IHSNO's fundraising efforts. The team conducted research on the building, past uses, preservation and programmatic needs.

The proposed design maintains the school's traditional classroom spaces, while adding dynamic new features including a courtyard cafeteria, student gallery, study commons, recreational courts and outdoor event areas. The plan also consolidates the location of student services, offers new kitchen facilities and incorporates a box theater and dance studio. All to support the aspirations of the dynamic student body and teaching staff and bolster IHSNO international, forward looking stance.

>> opposite: rendering of school yard  
with outdoor 'stage'  
>> below: scan of historic drawings







- >> above: floor plans
- >> opposite top: learning commons rendering
- >> opposite bottom: cafeteria rendering



## PARTNER

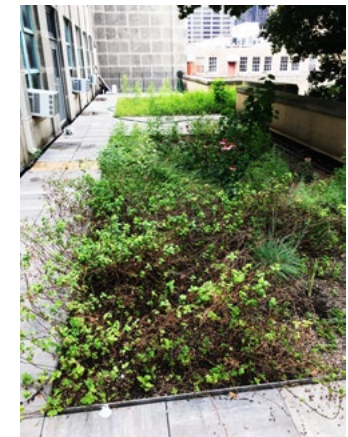
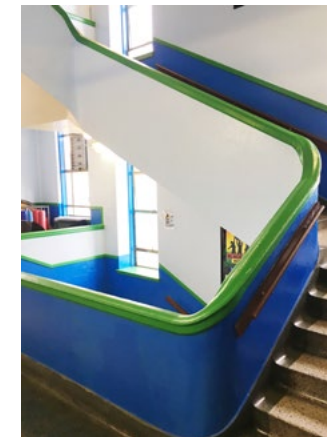
The International High School of New Orleans (IHSNO) is a public, college preparatory charter school located in the Central Business District open to all Louisiana residents. IHSNO is the only high school in New Orleans offering students the opportunity to participate in the International Baccalaureate Diploma Programme. This program is recognized by the world's leading universities for its ability to encourage students to think broadly, beyond the boundaries of their communities, and to develop the intellectual, personal, emotional and social skills needed to live, learn and work in a global economy.



The project team presented completed designs to the IHSNO board in Spring 2019. The associated design document will be used in combination with additional presentations to stakeholders including the Orleans Parish School Board and Downtown Development District to aid IHSNO in finding a path forward towards a renovated historic facility with modern amenities suited to the needs of a contemporary high school.

## OUTCOME

>> opposite: learning common rendering  
 >> below: sectional axonometric  
 >> bottom: photos from site visits and engagement sessions





# RECHARGE NOLA

ENVIRONMENTAL EDUCATION // WATER LITERACY

FALL 2018

Water management is a pressing issue for Southern Louisiana. Recharge NOLA helps individuals understand the scale of the problem and focuses on what individuals can do on their own properties.

Our project team worked with Recharge to develop a new way to convey information about water management and these solutions. We worked collaboratively to design educational boards to attach to Recharge's mobile trailer. Using the trailer as a "stage", the new materials facilitate Recharge's interactive rain barrel and water management workshops at pop up events across the city.

## OUTCOME

The team created, edited, and fine tuned colorful, educational panels for use in Recharge's workshops. The panels are being used at sessions across the city to both frame the larger water management problem and explain the specifics of rain barrel installation.

>> right: Recharge community engagement event

>> below: water recollection diagrams

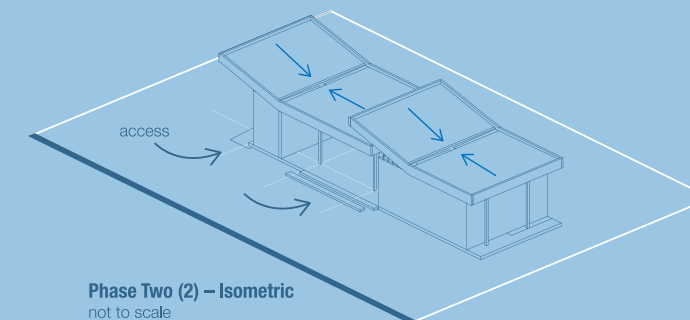
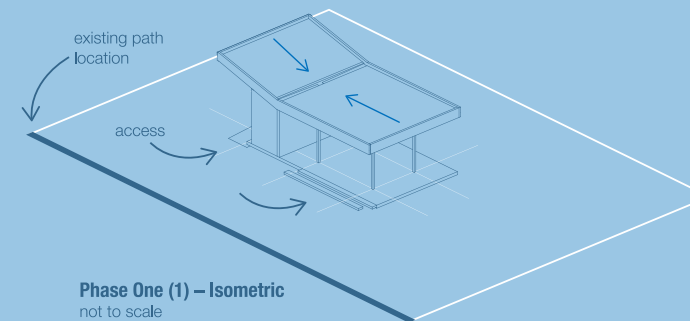


# NORTHLAKE NATURE CENTER

SUSTAINABILITY + WATER MANAGEMENT

SPRING 2019

The Northlake Nature Center is a non-profit organized to preserve, study, and publicly exhibit the natural and cultural resources of the Florida Parishes in southeastern Louisiana. Located on 400 acres in St. Tammany Parish, the park provides an opportunity for educational programming, recreation, nature-related festivals, and more. Following a structure fire on the property, Northlake engaged the Small Center to provide designs for bathroom facilities to help enable educational programming on the site, namely schools and other youth groups. Small Center worked to create a phased design that would meet budget expectations and fit in with the natural surroundings. Designs included sustainability features such as water collection and reuse using a butterfly roof, composting toilets, and use of renewable resources.



## OPPORTUNITIES FOR GRADUATE STUDENTS

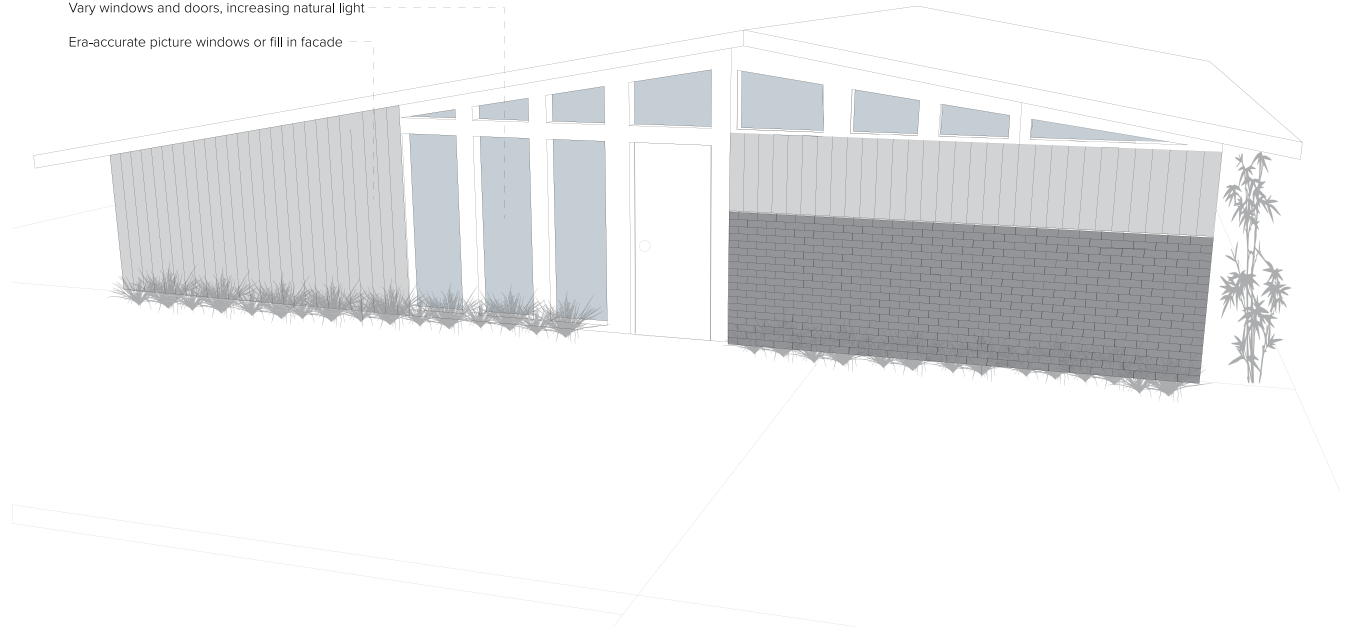
One of the many ways for graduate students to get involved at the Small Center is through graduate research fellowships. These positions provide students interested in community engaged design an opportunity to work with our team on smaller projects throughout a semester — attending partner meetings, diving deeper into research, working through community design needs, and producing materials to advance projects.

The two projects outlined here are examples of recent projects our team was able to tackle with graduate research fellows.





Re-Introduce clerestory windows  
 Vary windows and doors, increasing natural light  
 Era-accurate picture windows or fill in facade



# TERRYTOWN DESIGN GUIDELINES

URBAN PLANNING

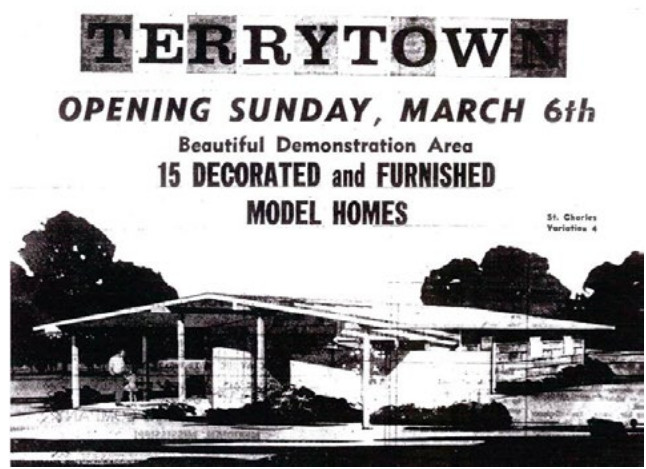
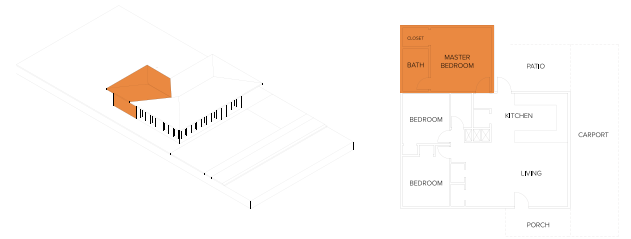
FALL 2018

The Small Center project team collaborated with Jefferson Parish planning department, Jefferson Parish Economic Development Commission, parish leaders and the Terrytown Civic Association to envision residential renovation design possibilities which enhance the architectural character of Terrytown and respond to current economic and environmental challenges.

We worked with partners to understand challenges facing homeowners, assessed the urban and architectural conditions of the neighborhood and create suggestions for home improvements paired with financial incentives. Surveys, public meetings and ongoing collaboration with realtors, residents and homebuilders allowed us to develop design guidelines that respond to the desires of homeowners, market forces and building logistics.

OUTCOME

Design Guidelines create a design framework for renovations and new built home construction that both respond to the mid-century modern aesthetic and increased threats of climate change and flooding. Schematic designs offer examples of floor plans, landscaping and green infrastructure. Jefferson Parish will build a model home in early 2020.







# RED BEANS ROUNDTABLES

FALL 2018- SPRING 2019

Red Beans Roundtables is a series of panel discussions and forums on the big issues facing our small city — we provide red beans and rice from Café Reconcile and speakers who offer unique insights into challenges and opportunities in New Orleans. Grounded in scholarly and practitioner expertise, the series has built a strong core audience of civic leaders, while remaining accessible to students and the general public. Because we believe that everyone brings expertise to the table, we ask our panelists and all participants to bring their questions, answers, and appetites to Small Center so we can learn, teach, and eat together.



## PANEL TOPICS

// FROM REDLINING TO ROAD HOME TO SHORT TERM RENTALS  
// RACE, LAND USE, AND ENVIRONMENTAL JUSTICE  
// DEVELOPMENT WITHOUT DISPLACEMENT  
// FIT FOR A KING RECEPTION WITH CIVIL RIGHTS ACTIVIST DIANE NASH  
// EVICTIONS IN NEW ORLEANS  
// "HOW TO KILL A CITY" WITH PETER MOSKOWITZ  
// COMMUNITY CONVERSATION ON NEW ORLEANS' EVICTION GEOGRAPHY



# UNDESIGN THE REDLINE

PUBLIC PROGRAMS // EXHIBITION

FALL 2018 - SPRING 2019

Undesign the Redline is an interactive exhibit created by designing the WE that explores the racial segregation in United States housing policy and how these legacies of inequity and exclusion continue to shape our communities. The exhibit, which was adapted to include the local history of New Orleans, also explored approaches to reknit our urban context and emerging efforts to do so with a focus on affordable housing.

The exhibit offered an opportunity to convene representatives from various non-profit organizations, municipal government, public service and private sector entities to discuss topics ranging from the future of public housing to social determinants of health and served as an opportunity for affordable housing advocacy organizations to educate a broad audience. The Small Center served as a host and assisted with programming for Undesign the Redline, which was brought to the city by Enterprise Community Partners and Foundation for Louisiana.

OUTCOME

Over 400 attendees, 39 organizations, 2 universities visited the exhibit and engaged with public programming offerings.

>> opposite: photos from exhibition reception and events  
>> below: detail of exhibition boards created by designing the WE



# FINING

community activist John McKnight in refers to the practice of denying loans based in some part on its racial and ethnic limitations. While its roots are traced to practice continued legally into the 1970s. the Community Reinvestment Act in 1977, ge in the practice. For instance, Hudson ordered by government agencies in 2015 n fines and restitution because they had onately denying loans in predominantly orhoods. Dr. Mindy Fullilove refers to the edlining as a "Rosetta Stone" for nt societal crises.

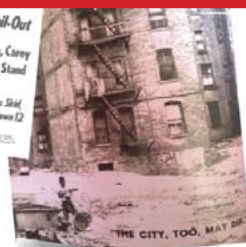
1949  
**National Housing Act**  
The American Housing Act of 1949 authorized and financed vast programs of Urban Renewal and Slum Clearance, greatly expanded federal (FHA and VA) mortgage insurance to fuel suburbanization, and committed our nation to building hundreds of thousands of Public Housing units. The private real estate sector felt threatened by public housing for White working and middle class Americans and lobbied against any kind of federally subsidized

**Contract Buying**

In many cities like Chicago, the only opportunity for homeownership for Black families was to buy "on contract" from the seller. In this rent-to-own scheme, interest payments were high and missing just one payment would mean the owner would lose the home back to the contract seller.

1964  
**URBAN RENEWAL PROGRAM**

commonly thought of as a policy of a bygone era, Urban Renewal continues to linger on as a planning process in cities across the country.



On the heels of Redlining, slum clearance and urban renewal, disinvestment, planned shrinkage and fires, a series of epidemics swept through the same neighborhoods. These epidemics were intertwined with other deep, systemic and entangled crises occurring in these places at the time.

# EPIDEMICS

On the heels of Redlining, slum clearance and urban renewal, disinvestment, planned shrinkage and fires, a series of epidemics swept through the same neighborhoods. These epidemics were intertwined with other deep, systemic and entangled crises occurring in these places at the time.

**Heroin Epidemic**  
It could be said that an epidemic of despair preceded the heroin epidemic, but this is in many ways the first of a series of drug epidemics to sweep through these neighborhoods, often destroying the lives it touched. Instead of treatment, addicts were criminalized.

**HIV/AIDS Epidemic**  
AIDS followed along with Heroin, often being transmitted through needles. AIDS was for a time concentrated to certain neighborhoods in the Bronx, but planned shrinkage scattered those populations, spreading AIDS. This was a key moment in the transition of AIDS into a global epidemic.

# 'RIOTS'

For decades, people have taken to the streets



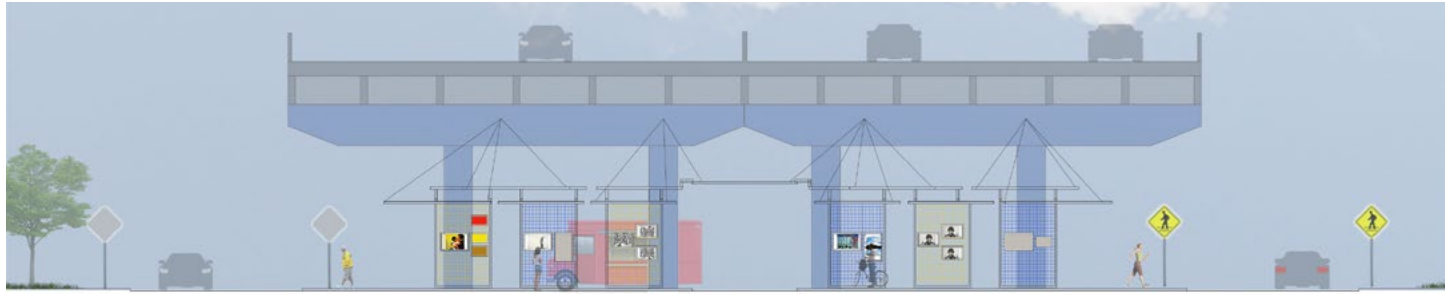
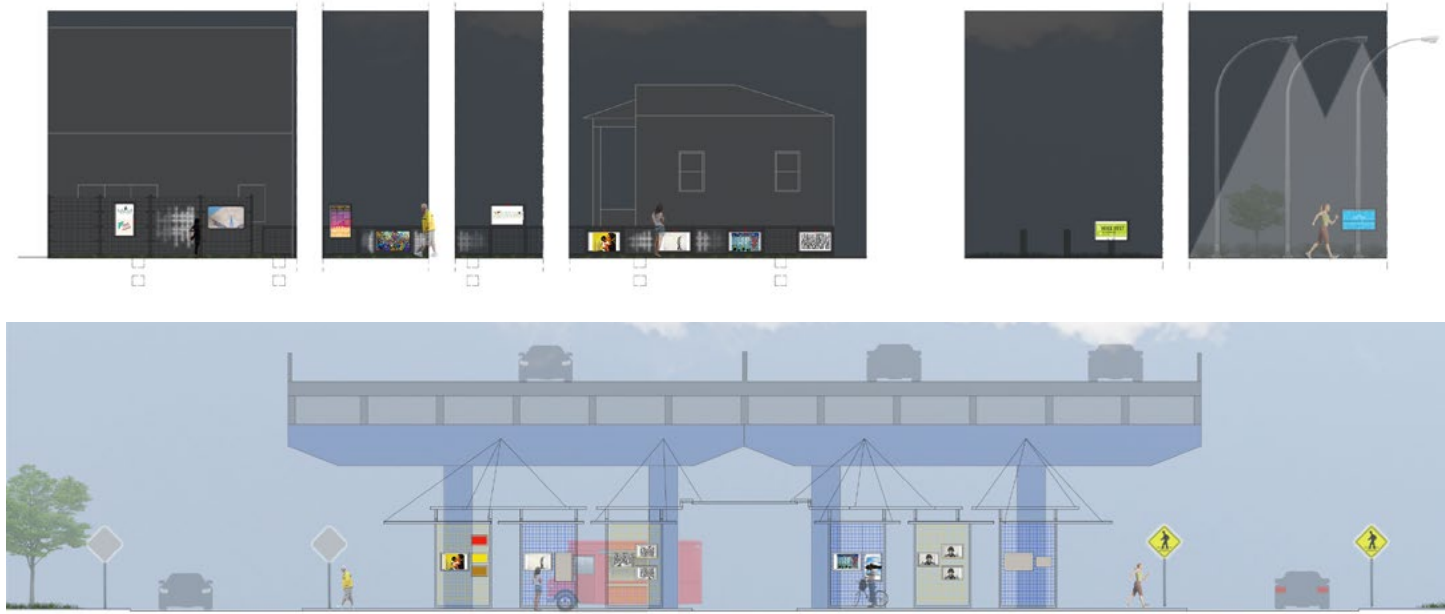
# UNRAVELED SOCIAL FABRIC

# FIRES 1970-1980s

As neighborhoods were torn apart and disconnected by Urban Renewal and other forms of mass displacement, people began to







# DESIGN IN THE PUBLIC INTEREST

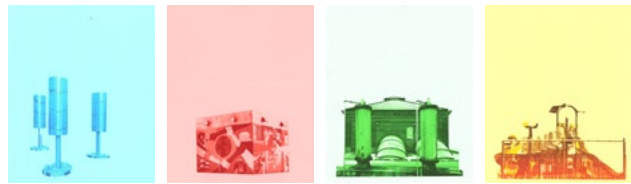
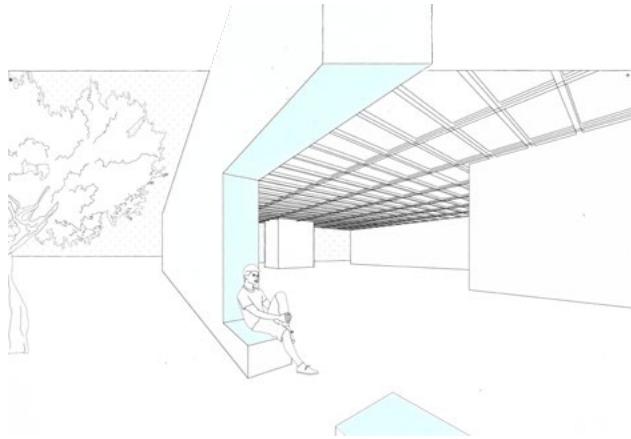
PUBLIC SPACE IN  
NEW ORLEANS // SEMINAR

SPRING 2019

"I AM THE TRANSLATOR BETWEEN PEOPLE AND BUILT FORM. AND THROUGH THIS SEMINAR I LEARNED TO ALLOW MYSELF TO FALL INTO COMMUNITIES AND LIVE THEIR EXPERIENCES IN ORDER TO BEST ADDRESS THEIR NEEDS."

- KYRA NASSER, '19

>> opposite: sensory map of lafitte greenway  
>> above: design proposals exploring new strategies for public art  
>> below: reimagining existing infrastructure for public use



This seminar explores the topics of space and place, our relationships to both, how they inform our lives, and how we can better think about and act on them as individuals interested in pathways that will affect the built environment. We look at how public space in New Orleans has evolved throughout the city's history, digging into the strata of policies, events, and cultural practices that have aided or stunted the development and use of public space. We examine the role of public space in New Orleans today and how it's being leveraged as an asset for cultural production and resistance for some, and as a tool that perpetuates systems of inequity and oppression. And lastly, we envision what public space in New Orleans can look like moving forward given the findings and learnings that emerge from our research, discussions, and community engagement opportunities. This is a moment for us to consider the physical characteristics of our future public spaces and to sit with larger questions about where it exists, who owns it, who develops it, and what policy and cultural changes are needed to get us there.

*"As PID continues to establish itself as a distinct and important discipline in the public realm and the wider design community, the "Design in the Public Interest" seminar is a critical exploration of various aspects of the relationship of design and the public that prompts students to position themselves within the realm of conscious design. The seminar provides an opportunity for students to fundamentally understand why and how we participate in design with social benefit. The class facilitates valuable open discourse and situates that discourse in the context of both the classroom and the public spaces of New Orleans balancing the theories and realities of socio-spatial design."* — Ming Lin, '20



## ENVIRONMENT



The environments in which we live and work impact our well-being. Environmental health focuses on these relationships and includes topics ranging from toxin exposure and occupational safety to building design and social cohesion. Vulnerable populations disproportionately experience negative environmental health consequences.



**DID YOU KNOW?**  
Controlling for other factors, exposure to airborne particulate matter (PM2.5) varies by race in the United States. African Americans are exposed to 1.5x more particulate matter than Whites. Hispanics are exposed to 1.3x more particulate matter than Whites. (Bell and Ebisu 2012)

## MENTAL HEALTH



A vital component of our well-being is our mental health which includes our emotional, psychological, and social well-being. Mental health conditions are not necessarily the result of one event or factor. Research suggests multiple, linking causes such as genetics, environment and lifestyle. Statistical data suggests a correlation between mental illness and other issues including substance abuse, incarceration, and homelessness (National Alliance on Mental Illness).



**DID YOU KNOW?**  
In the United States, 1 in 5 adults experience a mental illness and 1 in 5 teenagers live with a mental health condition. (National Alliance on Mental Illness)

In Louisiana, due to the loss of the public hospital system, people with mental illness have almost 5x more chance to be jailed than hospitalized. (New Orleans Musicians Clinic 2015)

## FOOD + NUTRITION



The foods we eat nourish our physical and social well-being. Nutritious food helps us maintain healthy bodies, whereas unhealthy (or insufficient) foods contribute to obesity, vitamin deficiencies, type 2 diabetes, and heart disease. Food is connected to our cultural identity and our ways of life. Farming, fishing, preparing, and serving food drives local economies and lifestyles. Food is central to community and family gatherings, especially during special events and holiday celebrations. Recipes are cherished and passed from generation to generation.



**DID YOU KNOW?**  
Fewer than 1 in 10 children and adults eat the recommended daily amount of vegetables.

In 1991, about 8% of U.S. adults reported being aware of the recommended daily fruit and vegetable intake. In 2004, that number had increased to 40%.

Between 2012 and 2016, more than 4,800 schools obtained and offered salad bars to more than 2.4 million children and staff to increase fruit and vegetable options. (Facts from the Center for Disease Control)

## ACCESS: HEALTHCARE



For many, lack of access to adequate health resources is a significant barrier to well-being. Access may be limited due to physical barriers (distance, transportation options), financial barriers (insurance premiums, service fees), social barriers (race, gender, language, stigma) or service limitations (few qualified providers, difficult to navigate healthcare systems). During times of emergencies or disasters, access becomes even more of a challenge, especially for the most vulnerable populations.



**DID YOU KNOW?**  
Healthcare costs and income loss due to illness are the primary reasons for bankruptcy filing every year in the United States. Together, they represent 67.5% of those who file for bankruptcy. (D. Himmelstein et al 2019)

# DESIGN + PUBLIC HEALTH

PUBLIC SPACE IN  
NEW ORLEANS // SEMINAR

SPRING 2019

This seminar explores the intersections of design and health at the scale of object, building, neighborhood, region and beyond. Grounded in the World Health Organization's definition of health, "the state of complete physical, mental and social well-being and not merely the absence of disease or infirmity", we examine how design fundamentally shapes our health as individuals and at population scale. Collectively, we both consider how language and vocabulary shape our understanding and engage with design and public health theory, research and practice. We ask ourselves hard questions. In spring 2018, specific questions included what role can architecture play in responding to climate change; how might design address trauma; will certification move us toward healthier building design; what are the cumulative impacts of flooding and environmental degradation and how do definitions of place impact health? Through readings, discussion, guest lectures, field trips, reflection and writing, we evaluate past impacts and imagine possibilities for a future. All with a focus on identifying and articulating opportunities for collaboration and exchange to improve health outcomes.

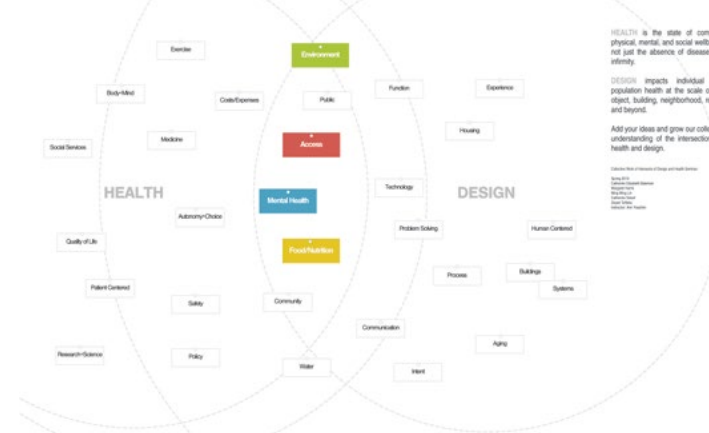
**"Design + Public Health was one of the most memorable seminar courses I took while Tulane. The seminar gave the architecture students an opportunity to interact and collaborate with students from different schools and programs, such as the school of Public Health and the CCC program. Additionally, with a background in both public health and design-thinking, Professor Yoachim planned a curriculum that surveyed a wide range of topics that aren't typically discussed in traditional architecture seminars."**

**—Margaret Harris, Student**

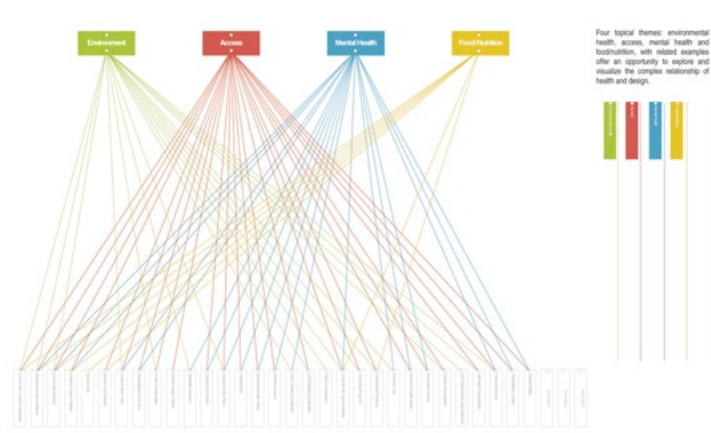
>> left: exhibition boards highlighting 4 core intersections of health and design

>> opposite: interactive exhibition boards

### WHAT ARE THE INTERSECTIONS OF HEALTH AND DESIGN ?



### VISUALIZING THE COMPLEXITY OF HEALTH AND DESIGN





# FIELDWORK:

## DESIGN BUILD CONVERSATIONS

JANUARY 25-26

TULANE SCHOOL OF ARCHITECTURE | NEW ORLEANS

**FEATURING:** ANGELA CARPENTER | FAY FABRICATION LABORATORIES TOM CARRUTHERS | DREAM THE COMBINE ANDREW COLOPY | CONSTRUCT COLEMAN COKER | GULF COAST DESIGNLAB GREGORY CORSO | SPORTS SHANNON CRISS + NILS GORE | DOTTE AGENCY ANTHONY FONTENOT | WOODBURY JOSE GALARZA | DESIGN BUILD BLUFF NICK GELPI | GELPI PROJECTS GEOFF GJERTSON | BUILDING INSTITUTE MARY HARDIN | DRACHMAN DESIGN-BUILD COALITION KATHERINE HOGAN + VINCENT PETRARCA | TONIC DESIGN ADAM HOPFNER + KYLE BRADLEY | VLOCK BUILDING PROJECT BYRON MOUTON | URBANBUILD NINA PAWLICKI | NATURAL BUILDING LAB DAVID PERKES | GULF COAST COMMUNITY DESIGN STUDIO JEANA RIPPLE | MIR COLLECTIVE CORDULA ROSER GRAY | TULANE BENJAMIN SMITH | TULANE MACKENZIE STAGG + NATALIE BUTTS-BALL | RURAL STUDIO TOLYA STONOROV | NORWICH JOE VIDICH | KIN AND COMPANY EMILIE TAYLOR WELTY + ANN YOACHIM | SMALL CENTER + INAUGURAL TULANE DESIGN BUILD AWARD

FREE! RSVP AND MORE  
DETAILS ON EVENTBRITE

URBANBUILD THE ARCHITECT AND THE SMALL CENTER TULANE SCHOOL OF ARCHITECTURE



# FIELDWORK: DESIGN BUILD CONVERSATIONS

JANUARY 2019

Fieldwork was a two-day symposium focused on expanding research and dialogue on design build education. The conversations engaged other academics, scholars, and practitioners working in national design-build conversations on three central themes: Context: Collaborations and Scales; Methods: Materials and Processes; Contributions: Scholarship and Pedagogy.

Research presented highlighted how design-build pedagogy informs practice, shapes professional trajectories, engages with architectural theory and what constraints and opportunities emerge through design build at multiple scales. All with an intent to inform and shape the future of design build pedagogy. A book will be forthcoming.





# LOUISIANA UNIVERSITIES RESILIENT ARCHITECTURE COLLABORATIVE

RESILIENCY + GROWING NETWORKS

ONGOING

LURAC aims to “weave together” architects and other resilience specialists to deepen knowledge of the challenges of resilient buildings and community form, to develop and implement design solutions at the neighborhood and community scale, and disseminate best practices through professional networks and beyond.

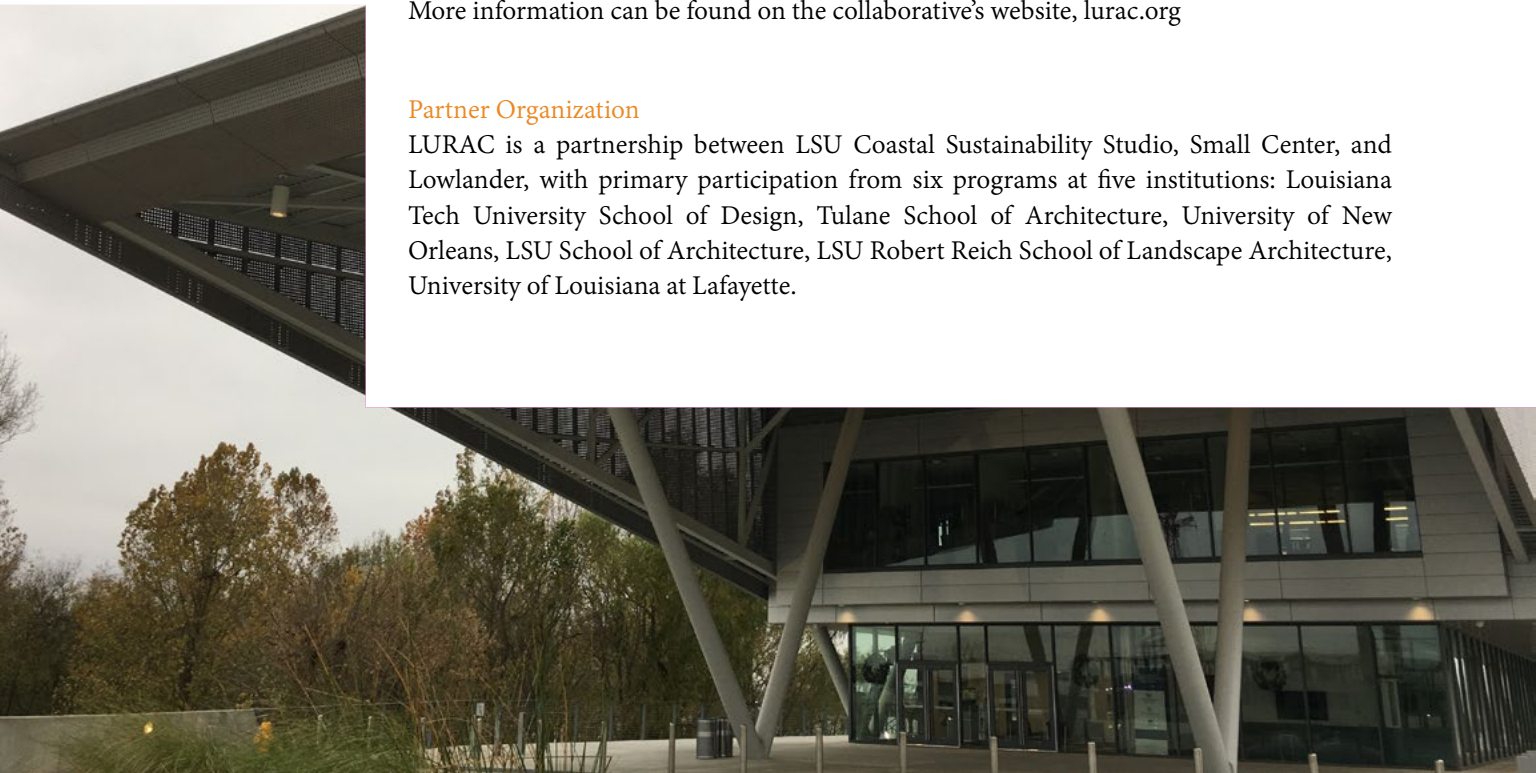
Small Center facilitates the participation of the Tulane School of Architecture within the LURAC network, participating in faculty leadership activities and serving as co-leader of the project alongside both the LSU Coastal Sustainability Studio and the Lowlander Center. More information can be found on the collaborative’s website, [lurac.org](http://lurac.org)

## Partner Organization

LURAC is a partnership between LSU Coastal Sustainability Studio, Small Center, and Lowlander, with primary participation from six programs at five institutions: Louisiana Tech University School of Design, Tulane School of Architecture, University of New Orleans, LSU School of Architecture, LSU Robert Reich School of Landscape Architecture, University of Louisiana at Lafayette.

“AT LA TECH, THE LURAC IDEA HAS BEEN RATHER SUCCESSFUL AS IT HAS HELPED US RETOOL TWO DESIGN STUDIOS THAT WERE NOT ON PAR WITH OUR PROGRAM’S PEDAGOGICAL EXPECTATIONS. AS A PROGRAM CHAIR, I WAS HAPPY TO ADD THIS INITIATIVE TO ENRICH OUR STUDENTS’ EDUCATIONAL ENDEAVORS, AND IT HAS RESULTED IN REGIONAL AND INTERNATIONAL EXPOSURE FOR OUR PROGRAM.”

—PASQUALE DE PAOLA, ARCHITECTURE PROGRAM CHAIR, LOUISIANA TECH







“Having attended Design Futures 2019, I’ve come away from that experience with a great deal of appreciation for the bravery everyone showed. The topics we discuss at DF2019 are never comfortable to confront. It is even harder when one considers the fact that we’re confronting these issues, often times among dozens of people that we have never met. In summation, I am very hopeful and excited about the impact that the brave individuals that attended DF 2019 will have on their respective universities and society at large.”

**BRANDON SURTAIN**  
**DESIGN FUTURES**  
**2019 ATTENDEE**

# DESIGN FUTURES

UNIVERSITY OF UTAH

**MAY 2019**

The Design Futures Student Leadership Forum is a five-day, interdisciplinary forum that brings together student leaders with practitioners and university faculty who engage in practices that leverage design as a tool for social equity and positive change. Since the forum launched in 2013, we have sponsored several students each year to attend and be a part of this growing network. We believe these spaces are instrumental for students who are looking to enter the world of public interest design, as they are able to connect with like-minded peers and begin to create the next wave of practitioners that will propel the field forward.



**CAROLINE GARFIELD**  
**DESIGN FUTURES**  
**2019 ATTENDEE**



“Design Futures has changed the trajectory of my life. At my first forum, I walked into a room of strangers and five days later left having met some of the most inspiring, like minded students and professionals from all different institutions, disciplines and cultures. I am now leading an alumni initiative. Throughout my lifetime, I want to be part of the movement to leverage my design education for good and collaborate on community-driven projects with fellow design futures alumni. These are my people.”



# 2 0 1 8 - 2 0 1 9 H I G H L I G H T S

## **100+ STUDENTS ENGAGED**

*Courses led by our Small Center team include:*

Design Build Studio Fall 2018  
3rd Year Core Studio  
Design and Social Change

Intersections of Design and Health  
Design in the Public Interest  
Design Build Studio Spring 2019

## **AWARDS**

ACSA Collaborative Practice Award  
Rudy Bruner Award for Urban Excellence — 2019 Silver Medalist, Parisite Skatepark  
AIA Louisiana — Honor Award, Greenline Pavilion (Small Projects Category)  
AIA Gulf States Awards — Award of Merit for Big Class (Interior), Ozanam Inn (Detail)

## **CONFERENCES**

*>> attended ; << hosted*

>> Walk/Bike/Places Conference, September 2018  
>> AIA Louisiana Design Conference, September 2018  
>> Phoenix AIGA (PHX Design Week), October 2018  
>> AIAS National Series THRIVE, Regional Architecture Conference, New Orleans, October 2018  
<< Fieldwork Design Build Symposium, January 2019  
>> ACSA National Conference, Pittsburg March 2019  
>> APA National Conference, San Francisco, April 2019  
>> Design Futures, University of Utah, May 2019  
>> AIA National Convention, Vegas, June 2019  
>> ACSA Teachers Conference, Antwerp, Belgium Summer 2019

## **50+ TOURS GIVEN // 20+ GROUPS HOSTED**

For a complete list of partners we've worked with and groups we've hosted, head over to [small.tulane.edu](http://small.tulane.edu)!



## **SMALLS' MULTI YEAR FUNDING + RENAMING**

Thanks to the generous support of Albert H. Small, Jr. and his wife, Tina, in 2017 we changed our name from Tulane City Center to the Albert and Tina Small Center for Collaborative Design at Tulane School of Architecture. Extra Small Design created a new website and logo for us that remains faithful to our history of community engaged design in New Orleans, while providing a better opportunity to showcase our work and clarify our message.

## **ENTERPRISE HOLDINGS FOUNDATION**

We are grateful to the Enterprise Holdings Foundation for their annual support of our work. Enterprise's support has allowed us to impact the built environment across New Orleans.

## **JOHNSON CONTROLS, INC. MULTI-YEAR FUNDING**

Johnson Controls, Inc. pledged a 10-year gift in 2010 which has funded more than 15 projects to date. The generous gift propelled us to launch the annual Request for Proposals process wherein community groups and nonprofits submit project proposals and a jury chooses which two proposals will be funded as visioning and design/build projects. This gift has enabled us to regularize our work flow, increase our impact and ability to take on projects, and create a more open and engaging selection process.

## **SURDNA MULTI-YEAR FUNDING**

We are grateful to the Surdna Foundation for their continued support and trust in our work. Surdna's support has allowed us to engage in a range of projects and more recently has funded our public programing and cross-project engagement strategies. Our projects would not be possible without their generosity.

For a complete list of our supporters in 2018-2019, please visit [small.tulane.edu](http://small.tulane.edu).

## **HOW CAN YOU JOIN OUR COMMUNITY OF SUPPORTERS?**

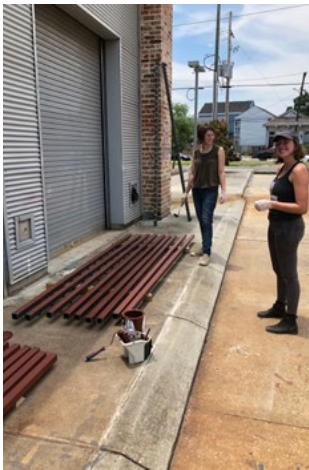
Each year, Small Center depends on generous friends and supporters like you to realize our mission: to bring together creative makers and doers to advance community-driven ideas through collaboration, design education, and scrappy problem-solving.

Your gift supports our various programs — design + build studios that help our community partners grow into their greatness, our Public Interest Design Fellowship which pushes our students to become more thoughtful and engaged designers, and the exhibitions and public programs that allow us to ask and explore pressing questions our communities face. To make a fully tax-deductible donation today, kindly donate online at [small.tulane.edu](http://small.tulane.edu). You'll find a "donate" button on the top right corner of our site!

Thank you for your generosity!





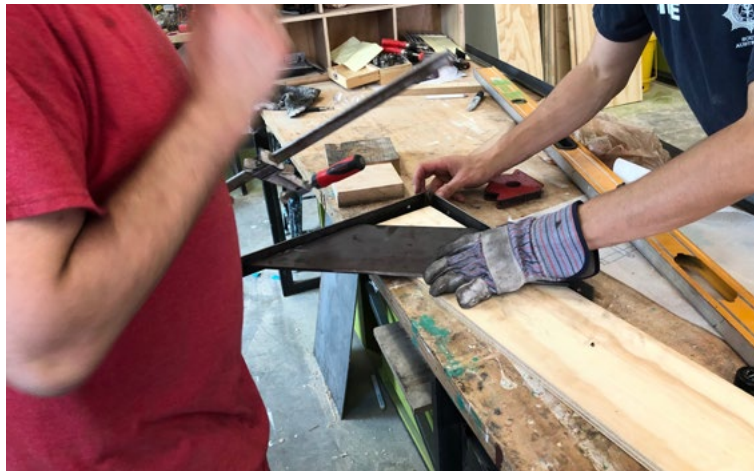


>> recent photos Donn took throughout our summer Public Interest Design Fellowship and Fall Design + Build Studio.



Donn's eyes are unquestionably one of the many things folks will remember about him — bright, vibrant, and engaging — a metaphor for how he lived and saw the world.

Donn cared deeply about our students. His warmth and generosity filled the Center and his innate ability to make all feel welcome is one of the reason the Small Center feels like a home for so many. Always curious, Donn could often be found making his way around our office, shop, and project sites, documenting what was unfolding in front of him. He had a keen eye for detail and color, always taking note and finding beauty in the small things. He loved capturing people doing things they loved — especially when they were working with their hands to contribute something to the world that would make it just a bit better. His perspective is deeply missed and the Small Center will not be the same without him.





# PROJECT CREDITS

## Groundwork Earth Lab

### Project Partner

Groundwork New Orleans: Alicia Neal, Joshua Davis, Riley Essert, Todd Reynolds, Ramiro Diaz, Green Team, Ground CREW

### Studio Team

Michelle Barrett, Kay Curtis, Dana Elliot, Jacqueline Esmay, Jared Faske, Dylan Goldweit-Denton, Clayton Hakes, Emily Kanner, Bryn Koeppel, Riley Lacalli, Caroline LaFleche, Collin Moosbrugger, Margaret Swinford, Max Warshaw

### Instructor // Project Manager

Adam Modesitt // Nick Jenisch

### Consultants

Jenny Snape / Batture Engineering

### Support

Johnson Controls, Inc.  
CTS Cement Mfg. Corp.

### Additional Contributors:

Gaylan Williams – Dana Brown & Associates, Inc., Alex Marks Photography, New Affiliates, New Orleans Healing Center

## Bayou Sauvage

### Project Partner

US Fish and Wildlife Service / Bayou Sauvage National Wildlife Refuge (Shelley Stiaes, Diane Barth, Jo Anne Dolan, Rebecca Larkins)

### Studio Team

Abby Boedigheimer, Luke Borden, Paolo Cattani, Madison Cook, Jordan Day, Joanne Engelhard, Perry Feinstein, Tao Li, Gabrielle Proeh, Jacob Smiley, Lingfeng Ye, Caroline Zimmermann

### Instructor // Project Manager

Emilie Taylor Welty // Nick Jenisch

### Consultants

Eric Lynn / *Workhaus*  
Jenny Snape / *Batture Engineering*  
Judith Kinnard, FAIA / *TSA’s Harvey-Wadsworth Chair of Landscape Urbanism*  
Emily Baker / *University of Arkansas, Fay Jones School of Architecture*  
David Merlin / *One to One*

### Support

Harvey-Wadsworth Chair  
Enterprise Foundation  
Favrot II Professorship

### Additional Contributors:

Louisiana Department of Transportation & Development, UNO’s Shea Penland Coastal Education and Research Facility, D&M Steel, Osborne Contractors Pile Driving, Tulane’s Center for Public Service

## International High School

### Project Partner

US Fish and Wildlife Service / Bayou Sauvage National Wildlife Refuge (Shelley Stiaes, Diane Barth, Jo Anne Dolan, Rebecca Larkins)

### Studio Team

Abby Boedigheimer, Luke Borden, Paolo Cattani,

### Instructor // Project Manager

Emilie Taylor Welty // Nick Jenisch

### Consultants

Eric Lynn / *Workhaus*  
Jenny Snape / *Batture Engineering*  
Judith Kinnard, FAIA / *TSA’s Harvey-Wadsworth Chair of Landscape Urbanism*

### Support

Johnson Controls, Inc.

## Recharge

### Project Partner

Recharge

### Project Manager

Nick Jenisch

### Student

Chewys Parra Paulino

## FARMacia

### Project Partner

NewCorp Inc.: Pamela Broom

### Studio Team

Abby Boedigheimer, Hannah Bannister, Griffin Daly, Chewys Parra Paulino, Taylor Scott, Maddison Wells

### Instructor // Project Manager

Jose Cotto // Emilie Taylor Welty

### Consultants

Jenny Snape / *Batture Engineering*

### Support

Eskew + Dumez+ Ripple  
Morris Adjmi & Associates  
William and Jane Siezler

## Northlake Nature Center

### Project Partner

Recharge

### Project Manager

Nick Jenisch

### Student

Chewys Parra Paulino



**S M A L L  
P R O J E C T S  
L A R G E  
I M P A C T S  
G R A N D  
A M B I T I O N S**



small.tulane.edu | 504.314.2330 | 1725 Baronne Street, New Orleans, LA 70113



@smallcenter.tulane

Sketch by Kyra Nasser, 2019