

Year in Review

2015 – 2016

ALBERT AND TINA

SMALL
CENTER

FOR COLLABORATIVE DESIGN

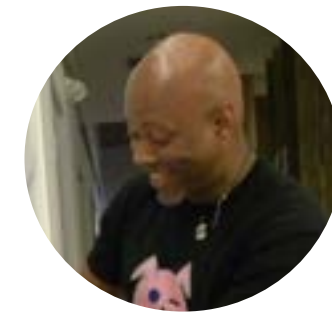
RED BEANS ROUNDTABLES The Louisiana coast, past, present and future, drawn onto the storefront's floor to show coastal land for March 2016's Roundtable, Growth and Decay in an Urban Delta (front cover)

MOBILE MARKET CNC cuts into Sankofa CDC's new logo

Who We Are



Maggie Hansen



Donn Peabody



Sue Mobley



Nick Jenisch



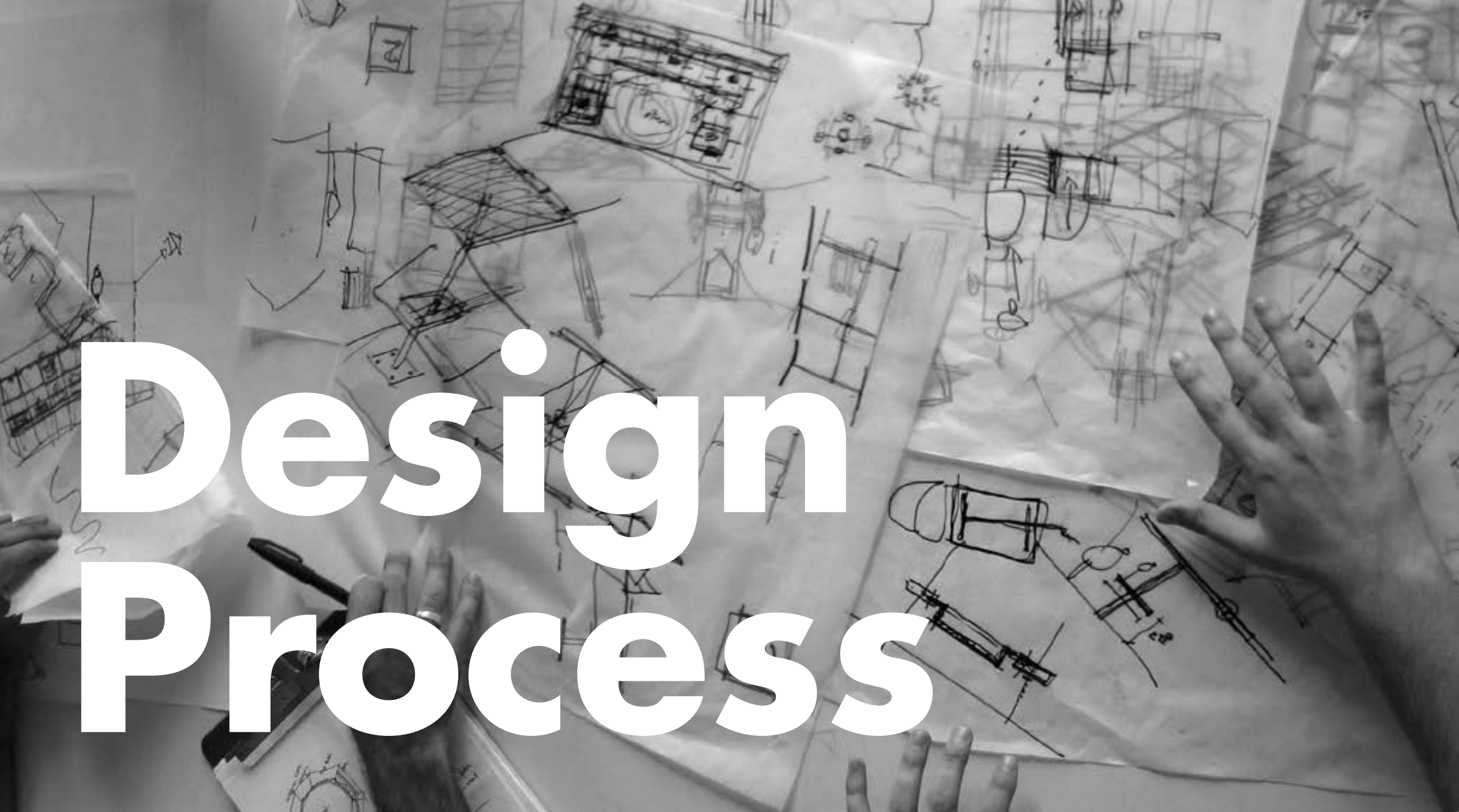
Shoshana Gordon



Emilie Taylor Welty

The Albert and Tina Small Center for Collaborative Design is the community design center of the Tulane School of Architecture. We work with community-based organizations to provide design services for constituencies who are underserved by the architecture and design professions. Staff, students, and faculty collaborate with the leadership and constituents of partnering nonprofit organizations throughout New Orleans. Our partner organizations bring their project ideas to us, and we bring our design expertise to bear in collaboration, supporting New Orleans residents in imagining and pursuing projects that strengthen neighborhoods and contribute to a city shaped by its citizens.

Our design work, whether a visual narrative or a built structure, is often a small, but critical contribution to advancing the ongoing efforts of our partner organizations. We develop projects in collaboration with faculty designers and professional collaborators to create designs that strive for beauty, social justice, and true sustainability, while working with other experts to build capacity in our partner organizations. Our work focuses on equitable process, meaningful outcomes, design excellence, and inclusion as critical parts of the design process.



Design Process

When selecting partners, we seek to create equity along racial, gender, and class disparities. We focus on organizations that are deeply rooted in the communities they serve and use the design process as a means to convene new allies and supporters for our partner organizations, expanding their organizational capacity, while strategically including their current stakeholders, staff, and end users.

Annually, New Orleans-based nonprofits and community groups are invited to submit a simple proposal for technical assistance through our Request for Proposals (RFP). A jury, with representatives from past project partners, faculty and professional architects, and peer institution leaders, review the proposals and rank the applications based on impact, feasibility, creative potential, and learning opportunities. Other projects, such as exhibits, graphic advocacy, or mapping, may arise less formally, growing out of a past project, expanding partnerships, or reflecting an emerging need in our community.

Once a partnership is started, the team holds multiple meetings with the community partner to learn more about the proposed project. By exploring the ecosystem in which our partner operates – the constituents, stakeholders, funders, and naysayers – we work together to develop a design process that strengthens those connections and the project outcomes through inclusion and feedback. Within these initial meetings, we collectively define success for the project, outline the parameters of our work and define goals within three categories: an appropriate design product, a stronger coalition for advocacy, and the education of young designers.

All projects are developed in a collaborative process that engages the organization's constituents and stakeholders to better shape the final product and to strengthen the organization's network at a moment of change. Our engagement process is tailored to each project's needs, yet it always starts with a few key steps: understanding what the partner wants to achieve, determining the most productive approach to include end users into the process, opening up the design process to include a broader network of collaborators and consultants, executing the project as a team, and celebrating as a team.

COMMUNITY BOOKS RENOVATION Detail of plywood study for the bookstore

Our History

The Small Center was first conceived in early 2005 as a way of applying the skills and energy of Tulane School of Architecture faculty and students to real world design and planning challenges. In August 2005, Hurricane Katrina struck New Orleans and the ensuing federal levee failure flooded 80% of the city, presenting an urgent and immediate need for this type of technical assistance. Then called the 'Tulane City Center,' we launched in late 2005 as a way to take part in the recovery of the city, educate students through applied projects, and work with the nonprofits and community groups who would be instrumental in the return of New Orleans citizens, culture, and traditions.

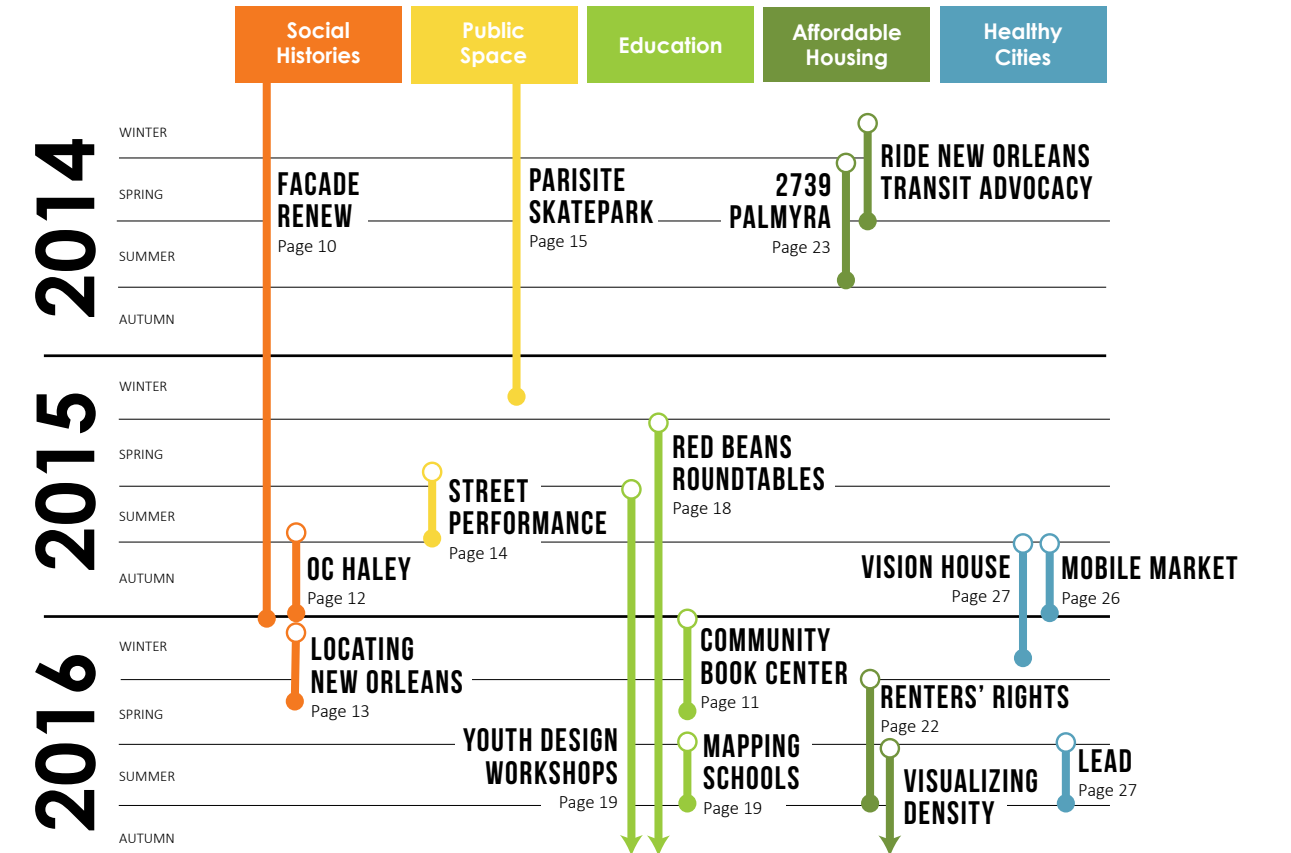
In our first 10 years, we worked with 74 community partners to advance more than 89 projects, at a variety of scales. Of these, we built 25 structures, and our pre-design work helped move 15 other projects to realization with local designers, developers, and builders. Our planning and policy studies have advanced ideas for more productive land use and helped spur improvements to our transit infrastructure. Our work has helped local nonprofits leverage millions of dollars to build the capacity and infrastructure needed to support their missions.

In 2014, we moved our headquarters from Tulane's campus to a neighborhood-based location in Central City. The 7,000 square foot Baronne Street building brought our workspace geographically closer to our project sites and partners, with workspace (including a studio and fabrication shop) tailored to our specific needs. The location offered opportunities to strengthen existing partnerships and to foster new relationships with community members, nonprofits and government agencies. Our Storefront gallery hosts public events and exhibits focused on issues of the built environment in New Orleans, and with the new opportunities of the space, we added a new staff position dedicated to shaping our community engagement and curating these public programs.

The Small Center is named in recognition of a generous gift from Tulane alumnus Albert Jr "Sonny" Small and his wife Tina, whose support was instrumental from the Center's early days and into the program's continued growth. Our nationally recognized projects provide examples of community based, environmentally sensitive designs that are locally responsive yet suggest solutions to national issues many cities and communities face. Thanks to the generosity of our supporters, and to the dedication and talent of our collaborators, we offer a sustained force for positive change in the built environment of New Orleans.

COMMUNITY BOOKS RENOVATION Drawings, models, and books from the renovation of Community Books

Recent Projects



Social Histories



Michael Wong
FAÇADE RENEW Bayou Road corridor (above)

COMMUNITY BOOKS RENOVATION Owner Vera Warren at the register with two young customers (opposite page)

« FAÇADE RENEW »

In January 2014, Small Center began a partnership with the New Orleans Redevelopment Authority (NORA) to launch the Façade ReNEW Program, a grant program designed to incentivize commercial property and small business owners to revitalize storefronts and building façades in four targeted areas of the city. Façade ReNEW is designed to spur redevelopment along portions of four historic commercial corridors in New Orleans: Bayou Road, Oretha Castle Haley Boulevard, St. Claude Avenue, and Alcee Fortier Boulevard. The program offered façade improvement grants for individual buildings and placemaking grants to main street associations. Clio Associates LLC worked directly with Small Center to provide 30 hours of technical design assistance for each of the grant applicants. This 2-year pilot program represents an investment of over \$1.5 million toward revitalizing these commercial corridors. The program has surpassed its participation goals and NORA is currently seeking additional funds to offer the grants to other key historic corridors.

COLLABORATORS Beth Jacob of Clio Associates LLC (Design Lead), Melissa Lee, Gionne Jourdan, and JaLeesa Sims-Smith of New Orleans Redevelopment Authority; Linda Pompa of Oretha Castle Haley Boulevard Merchants and Business Association, Jeff Schwartz of Broad Community Connections, Dawne Massey of St. Claude Main Street, Tuan Nguyen of Mary Queen of Vietnam Community Development Corporation

TEAM Maggie Hansen (Project Advisor), Dan Etheridge (Project Manager), Joseph A. Colon, Emma Jasinski, Allison Price, JD Scott, Nina Feldman, Emilie Taylor Welty, Nick Jenisch, Sue Mobley

SPECIAL THANKS Surdna Foundation

COMMUNITY BOOK CENTER RENOVATION »

Community Book Center focuses on books written by and about people in the African diaspora and for over 30 years has had a deep commitment to providing culturally competent resources for educators, students, and families. Community Books also provides a valuable teaching, retail, event, and gathering space for the New Orleans community. Like other small independent bookstores, however, Community Books is vulnerable to factors far beyond founder and owner, Vera Warren's, control. The aim of this 14-week design build studio was to create a space that reflects Community Books' identity as an African-American centered educational home, while adapting to be more accessible for new families and visitors coming to this rapidly gentrifying neighborhood. In Spring 2016, a class of 14 students worked with the staff and clients of Community Books to design and build a new interior for the store. This project is an extension of the Façade ReNEW work Small Center is engaged in along Bayou Road and other commercial corridors.

TEAM Emilie Taylor Welty (Design Lead), Sue Mobley, Gabby Black, Christophe Blanchard, Jordan Conway, Katarina Dvorak, Kristen Hill, Maggie Lloyd, Matt Raybon, Cassidy Self, Fernanda Silva, Jill Thompson, Ben Tulman, Evan Wagner, Alex Walker, Brian Webber, Donn Peabody, Maggie Hansen, Shoshana Gordon, Nick Jenisch

PARTNERS Vera Warren and Mama Jennifer of Community Book Center

SPECIAL THANKS Johnson Controls, Inc., Verbena Group, Tulane's Center for Public Service



Michael Wong



< c. 1857-60

View Down Felicite Towards the River from Dryades



c. 1920-25

View Down Dryades From the 1400 Block



1951

View Down Dryades at Euterpe



c. 1950

View Up Dryades from the 1600 Block



2015



2015



2015



2015



« ORETHA CASTLE HALEY BOULEVARD: PAST, PRESENT, FUTURE »

Oretha Castle Haley Boulevard, formerly Dryades Street, has witnessed over two centuries of change. First platted in the early 1800s, development on the corridor intensified in the 1850s as a thriving business district began to grow around the Dryades Market. Irish and German newcomers were followed by Eastern-European Jewish immigrants. African Americans settled in the district following the Civil War and developed a strong network of business, civic, and fraternal organizations. The corridor became a hub for activism during the Civil Rights movement but began to show signs of economic decline by the late 1960s.

This exhibit framed the discussion of “where we go from here” by exploring Oretha Castle Haley Boulevard’s layered and complex history and to uncover stories of people and places as told through its built landscape. Understanding the past of this multifaceted street can foster a deeper appreciation of its present and in turn lead to thoughtful and effective planning for the future.

COLLABORATORS Beth Jacob (Curator) and Gabrielle Begue of Clio Associates LLC, PlayBuild

TEAM Sue Mobley (Project Manager), Allison Price, Donn Peabody, Abby Bray, Kyle Maer, Maggie Hansen, Emilie Taylor Welty, Nick Jenisch

SPECIAL THANKS Surdna Foundation, New Orleans Redevelopment Authority, Oretha Castle Haley Boulevard Merchants and Business Association, the businesses that were participants in Façade RENEW

LOCATING NEW ORLEANS: AN EXPLORATION ON SHAKY GROUND »

In recent years, New Orleans has been tagged with an onslaught of adjectives: Inevitable, Unfathomable, Accidental, but none so often, or so contested, as Resilient. Defined as the ability to bounce back from shocks and stressors, resilience is both a goal and a self-evident truth. Resilience is also an aptitude largely built through the repeated experience of adversity; a capacity grounded in precarity as much as persistence.

For nearly 300 years, New Orleans has suffered and rebounded from the challenges of its precarious natural setting. To inhabit this place, we have constructed layers of systems and structures to control the dynamic forces of the environment, the economy, and our citizens. The city has continued to build on a history of choices that constrain future choices while often placing undue burdens on the most vulnerable.

This exhibit drew on maps and mapping to provide a visual exploration of precarity as the central feature of the shifting and interdependent factors within the physical, built, and social environments that construct the landscape of New Orleans. In this light, precarity was expanded historically as well as topically and complicates the construction of New Orleans as ‘resilient’ by focusing on the high costs of resilience to the city and its citizens.

COLLABORATORS Jebney Lewis, Jakob Rosensweig, The NET Charter School, New Orleans Center for Creative Arts

TEAM Sue Mobley (Curator), Donn Peabody, Abby Bray, Kyle Maer, Gustavo Rodas, Allison Price, Maggie Hansen, Emilie Taylor Welty, Nick Jenisch

SPECIAL THANKS Surdna Foundation



Historic Collection of New Orleans

LOCATING NEW ORLEANS An 1849 map showing locations of slave markets in New Orleans (above), and viewers examining different maps in the "Past" section of the exhibit (right)



Public Space



STREET PERFORMANCE A meeting between Ethan Ellestad, Director of MaCCNO; Tara Kennedy, street musician and MaCCNO Board member; and the 2015 Summer PID Fellows

» GUIDE TO NEW ORLEANS STREET PERFORMANCE

The Music and Culture Coalition of New Orleans (MaCCNO) is a coalition working to bridge the gap between the needs of the cultural community and regulatory policy in New Orleans.

Over the course of the two-week project, our 2015 Summer Public Interest Design (PID) Fellows read and charted hundreds of pages of city code and municipal ordinances while conducting musician on-the-street interviews and reviews with advocates, attorneys, and the City's Office of Cultural Economy.

The final product is a visually engaging and accessible guide outlining the rights and regulations on street performance in the French Quarter and Marigny. The Guide uses clear graphics to offer a spatial understanding of regulation, a know-your-rights and important rules for performing, and a visual guide to the various public and private enforcement bodies covering the area. Available online as well as at music venues throughout town, the guide has also been uploaded onto the iPads carried by the French Quarter Task Force, setting a new standard for enforcement.

COLLABORATORS Ethan Ellestad, Hannah Krieger Benson, and Tara Kennedy of Music and Culture Coalition of New Orleans

TEAM Sue Mobley (Lead), Gustavo Rodas, JD Scott, Lindsay Girardeau, Ashley Ricketson, Lauren Taylor, Nick Jenisch, Dozenia Marshall, John Coyle, Maggie Hansen, Emilie Taylor Welty

» PARISITE SKATE PARK

Parisite Skatepark, named for its proximity to Paris Avenue, was started by a group of skaters who took advantage of a vacant space beneath the I-610 overpass by building a DIY skatepark. This informal public space drew the attention of city officials who questioned the legal implications of operating such a recreational space. The skaters formed a nonprofit corporation called Transitional Spaces and partnered with Small Center to gain legitimacy with the city and develop a plan for the site. Together the team developed a phased master plan for the skatepark and road mapped the process of submissions and approvals for construction phases on site. Additionally, the Small Center team designed and built an entryway, 2,500 sq. ft. of rainwater collecting gardens, benches, bike racks, signage, and other park amenities. Small Center also connected Parisite with legal, engineering, and other professional support necessary to grow Parisite into a fully operational public space. Parisite opened in early 2015 as the first official skatepark in the City of New Orleans.

COLLABORATORS Perry Hohlstein, Andre Mills, Skylar Fien, Jackson Blalock, Ally Bruser, Julian Wellis, Ooti Billeaud, and Joey O'Mahoney of Transitional Spaces; Haley Delery, and Vince Smith of the City of New Orleans; Vic Richards and Annie LaRock of New Orleans Recreation Department

TEAM Doug Harmon (Lead), Matt Decotiis (Lead), Emilie Taylor Welty (Lead), John Coyle (Assistant Project Manager), Sara Conner, Ruben Contreras, Lee Cooper, Carly Epler, Elizabeth (Lizzie) Himmel, Tara Jean, Colleen Loughlin, Stephanie Mears, Tatyana Moraczewski, Paul Morin, Matt Ngo, Caitlin Parker, Ali Rex, Ashley Ricketson, Ian Rosenfield, Sanaa Shaikh, Jonathan Sharp, Alfia White, Grant Whittaker, Emily Youngblood, Nick Jenisch, Sue Mobley, Maggie Hansen, Donn Peabody, Maurice Cox, Dozenia Marshall

SPECIAL THANKS Heidi Tullman, Mayor Mitch Landrieu's Office, New Orleans Recreation Department Commission, City of New Orleans Capital Projects, Louisiana DOT, SURDNA, Johnson Controls, Inc., Anne Frederick Collaborative



Michael Wong



PARISITE SKATE PARK Initial rendering (above), designers meeting to talk about a model (far right), and students starting construction (near right)



NEW ORLEANS GUIDE TO STREET PERFORMANCE
The final brochure (opposite page)





Education

« RED BEANS ROUNDTABLES

What are the forces at work in New Orleans gentrifying neighborhoods, and what does it take to create a more equitable city? How do we honor the complexity of our shared histories? What are the policies and priorities that have shaped our housing landscape?

These are some of the questions taken on by contributors to our monthly Red Beans Roundtable series.

The Roundtables are casual conversations about the big issues facing our city. Small Center provides red beans and rice from Café Reconcile and great panels of speakers who have unique insights into the issues of New Orleans. Each Roundtable is structured as dinner and a panel discussion followed by a moderated discussion that engages the “audience” as experts in their own right. Our goal is to create more connections between sectors, between practitioners and scholars, and within our community. We believe in the value of creating a space for ongoing, solutions oriented conversations.

We ask our panelists and participants to bring their questions, expertise, and appetites, so we can all learn and teach together.

For a full list of our panelists from 2015 – 16, please see page 41.

TEAM Sue Mobley (Lead), Maggie Hansen, Nick Jenisch, Emilie Taylor Welty, Donn Peabody, Shoshana Gordon, Abby Bray, Camly Tram, Lei Ying, Elizabeth Rodriguez, Luna Eaton, Catherine Kantor, Kyle Maer

TOPICS

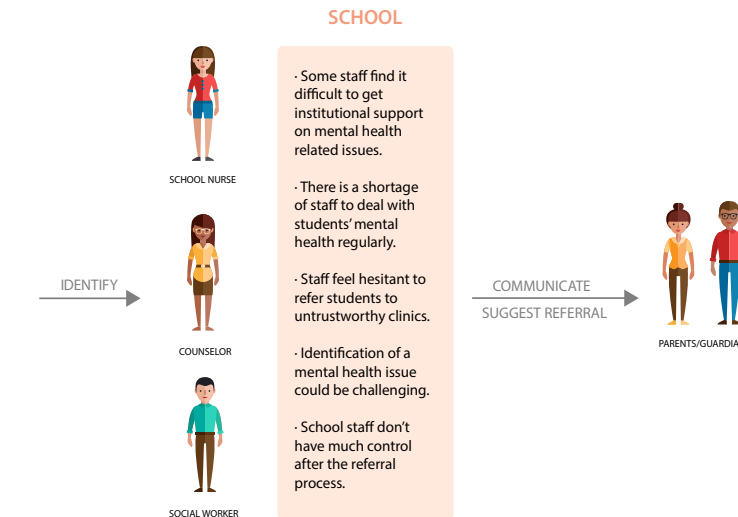
- Vacant Land, May 2015
- Food Access, June 2015
- Gentrification, July 2015
- Preservation as Revitalization, Oct 2015
- Social Histories of OC Haley, Nov 2015
- Regional Rail, Dec 2015
- New Monuments, Feb 2016
- Growth/Decay in a Delta, Mar 2016
- Affordable Housing: Teach-in, Apr 2016
- Community Development, May 2016
- Sustainable Tourism, June 2016

YOUTH DESIGN WORKSHOPS

Over the past year, Small Center has hosted events, collaborated on design projects, and displayed the work of students and youth from around the city. From design charrettes for a literary sno-ball stand, to an exhibition and student-led panel discussion on mapping as a tool for understanding one’s self in the city, we’re excited to contribute to youth driven programming and design education. We believe that nurturing design engagement with youth in a supportive environment increases their design literacy, and we work to engage youth from underrepresented communities as experts in the needs and dynamics of their city.

COLLABORATORS Jebney Lewis, Jose Cotto, and Heidi Schmalbach of Arts Council New Orleans; PlayBuild, Ashé Cultural Center’s Kuumba Camp, Project Pipeline, Young Creative Agency, The NET Charter High School, Big Class, New Orleans Center for Creative Arts, Saint Martin’s Episcopal School

TEAM Sue Mobley (Lead), Maggie Hansen, Nick Jenisch, Emilie Taylor Welty, Donn Peabody, Shoshana Gordon, Abby Bray, Camly Tram, Lei Ying, Elizabeth Rodriguez, Luna Eaton, Catherine Kantor, Kyle Maer



MAPPING SCHOOLS Graphics created by 2016 Summer PID Fellows Shirley Chen and Javier Gonzalez describing how students connect with behavioral health clinics (left)

RED BEANS ROUNDTABLES Participants at February 2016’s New Monuments Roundtable (opposite page)

MAPPING SCHOOLS AND BEHAVIORAL HEALTH CLINICS

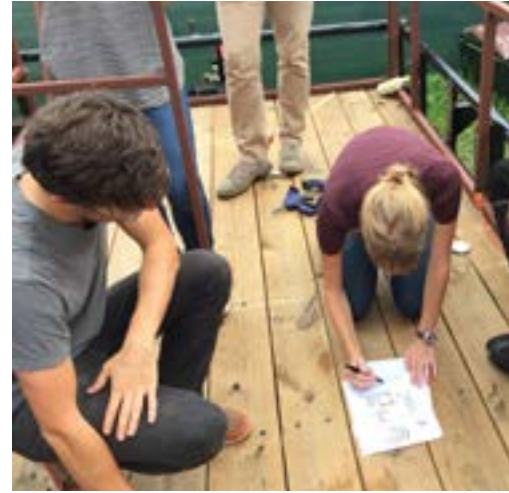
In Spring 2016, Small Center staff conducted a Public Interest Design Seminar for architecture graduate students. Through mapping, students explored the spatial relationships among schools, youth programming, and city-wide transit systems. The studies revealed various issues related to the decentralized nature of New Orleans’ post-Katrina school system, including a lack of reliable transportation and limited access to health services and recreation opportunities.

Using the seminar work, two 2016 Summer Fellows worked with the Recovery School District; the project team mapped schools alongside the similarly decentralized behavioral health system in order to understand gaps in care and suggest improved access for all public school students.

COLLABORATORS Alvin David of Recovery School District

SPECIAL THANKS Benita Cochran, Samantha Francois, Erin Mcburney, Mara Hahn, Amanda Schroeder, Elizabeth Ostberg, Heidi Schalmbach, Chavez Phelps, Jeff Schwartz, Doug Keller, Johanna Gilligan, Eliza Sheffield, and the Behavioral Health Council

TEAM Nick Jenisch (Design Lead), Jody Towers (Project Manager), Sue Mobley, Javier Gonzalez, Shirley Chen, Catie Nguyen, Regina Davis, Hannah Berryhill, Cassidy Rosen, Alexander Goessler, Jenny Renn Key, Sara Harper, Su Theng, Donn Peabody, Maggie Hansen, Emilie Taylor Welty, Shoshana Gordon



MOBILE SNOBALL STAND Students from the NET Charter School designed and created a Mobile Snoball Stand that doubles as a writing center for Big Class students. The NET students met with our 2016 Summer PID Fellows to brainstorm designs (above), and the almost finished structure (right)

SONGS OF HOME, SONGS OF CHANGE A team of high school students collaborated with local artist, Jebney Lewis, to create sound maps of the city. In Spring 2016, the students presented their maps to faculty respondents and a public audience in Small Center's storefront (opposite page)



Affordable Housing



RENTERS' RIGHTS CAMPAIGN A focus group meets to talk about the renters' rights advocacy campaign (opposite page) and the finished informational brochure folds up into a house

« RENTERS' RIGHTS ADVOCACY CAMPAIGN

Many New Orleans renters live in unsafe conditions which directly impact their health, productivity, and quality of life. The Greater New Orleans Fair Housing Action Center (GNOFHAC) is building support for legislation for the inspection and enforcement of safe rental housing. The Small Center team collaborated with GNOFHAC to inform and incite civic action in targeted neighborhoods around the city to dovetail with GNOFHAC's city-wide policy initiative. The aim of this campaign is to inform residents, create a group of committed stakeholders through the design process, and result in legislation which guarantees renters more rights, improves the quality of housing, and provides assistance to landlords who want to make improvements to their property.

COLLABORATORS Max Ciardullo and Renee Corrigan of GNOFHAC

TEAM Emilie Taylor Welty (Design Lead), Alberta Wright (Project Manager), Cassidy Rosen, Kati Dvorak, Javier Gonzalez, Katie Nguyen, Regina Davis, Hanna Berryhill, Alexander Goessler, Jenny Renn Key, Sara Harper, Su Theng Poon, Sam Williams, Aurora Smith, Maggie Hansen, Sue Mobley, Nick Jenisch, Donn Peabody, Shoshana Gordon

SPECIAL THANKS Jeff Schwartz of Broad Community Connections, students of Young Creative Agency

2739 PALMYRA

New Orleans is a city facing rising rents and displacement of low to moderate income families. Jane Place Neighborhood Sustainability Initiative (JPNSI), a non-profit housing and community development organization, was created in 2008 to address these issues and create sustainable, democratic, and economically just neighborhoods and communities. Small Center worked in collaboration with the Tulane School of Architecture's Master of Sustainable Real Estate Development program to understand the housing options in two buildings JPNSI owns. The project team traveled to New York City to research precedents and developed reports that outlined the framework of a Community Land Trust and a vision for the JPNSI buildings. JPNSI renovated the Palmyra street building in 2015 through a community land trust, and it serves as a model for permanently affordable housing in Mid-City. Design work begins on their second building in 2016.

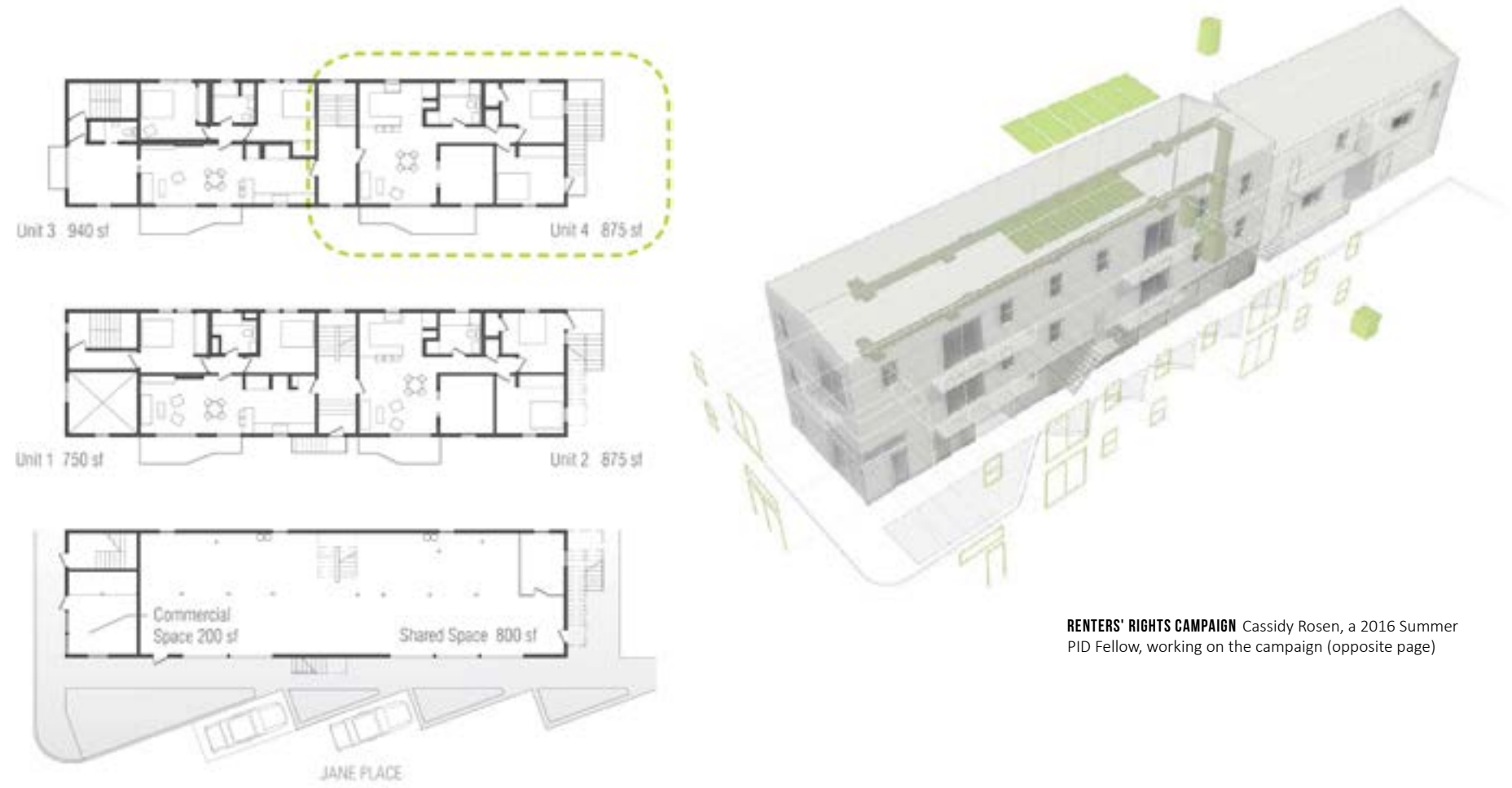
COLLABORATORS Adrian Manriquez, Isabel Barrios, Maxwell Ciardullo, Kate Scott, Brice White, and Shana griffin of JPNSI

TEAM Cordula Roser Gray (Design Lead), Dan Etheridge (Project Manager), Casius Pealer, John Nelson, Evan Amato, Brian Sulley, Andrew Mayronn, Nick Jenisch, Emilie Taylor Welty

SPECIAL THANKS SURDNA Foundation



2739 PALMYRA Floor plan (left), and rendering (right)



RENTERS' RIGHTS CAMPAIGN Cassidy Rosen, a 2016 Summer PID Fellow, working on the campaign (opposite page)



Healthy Cities



MOBILE MARKET The Mobile Market completely unfolded

LEAD A proposed bus-stop poster as part of the campaign to raise awareness about unsafe levels of lead in New Orleans drinking water

« SANKOFA MOBILE MARKET

Our Fall 2015 design build studio project worked in partnership with Sankofa CDC, a Ninth Ward based nonprofit, to design and build a dynamic mobile produce market. The aim of the truck-based fruit and vegetable stand was to increase Sankofa's capacity to serve senior centers and health clinics around the city. Sankofa's organizational mission is to support the creation of a local environment that promotes positive health outcomes and long-term community well-being.

The Mobile Market is a transformable addition to the bed of a pick-up which can be loaded with produce and folds up to drive through the city streets. It unfolds in an efficient and graceful way to produce shade, display information, and provide a community gathering space.

COLLABORATORS Rashida Ferdinand, Rosa Torres, and Grace Williams of Sankofa CDC

TEAM Doug Harmon (Design Lead), Emilie Taylor Welty (Project Manager), Sue Mobley, Ruben Contreras, Jenny Renn Key, Eric Lynn, Michael Meline, Shelby Mills, Sarah Morasso, Gianna Morelli, Joseph Newman, Catherine Nguyen, Allison Price, John (JD) Scott, Laura Stokley, Megan Van Artsdalen, Calla Bardwell, Donn Peabody, Nick Jenisch, Maggie Hansen, John Coyle

SPECIAL THANKS Johnson Controls, Inc., Andrew Schrock, Mercy Endeavors Senior Center, Justin Shiels, Milhaus, Jody Towers

LEAD »

Like many cities, much of the old water infrastructure in New Orleans is composed of lead plumbing. Over the summer, we worked with the Lead Exposure Assessment for Drinking Water Study (LEAD) based at LSU School of Public Health to develop graphic education and advocacy materials targeted to New Orleans citizens most at risk for health impacts due to lead exposure from drinking water.

COLLABORATORS Adrienne Katner, Lizzie Huval, Joye Pate, C Galliano, and J Galliano of New Orleans Lead Exposure Assessment for Drinking Water Project at Louisiana State University Health Sciences Center (LSUHSC)

VISION HOUSE

Women With a Vision (WWAV) is an organization working to improve the lives of marginalized women, their families, and communities. In the aftermath of an arson attack on their former location, WWAV worked with Small Center to redesign a newly acquired building to serve as its headquarters. The project team closely considered the spatial needs of the expanding organization and its diverse communities of clients, building on its long-running success while better accommodating staff and programming.

COLLABORATORS Deon Haywood, Shaquita Borden, and staff of WWAV

Together, we developed a set of graphics to encourage participation in the drinking water study, and additional graphic documents to inform citizens about the impacts and the steps they can take to reduce their exposure. Engagement activities at local markets and with public health workers sought to clarify the messages of our materials while raising awareness around the issue.

TEAM Maggie Hansen (Design Lead), Emilie Taylor Welty (Project Manager), Pavlo Iosipiv, John Ludlam, Donn Peabody, Sue Mobley, Nick Jenisch, Shoshana Gordon

The design focused on WWAV's variety of programs and users, ensuring that clients at their most vulnerable moment might find a place of support and comfort at Vision House. The collaborative effort packaged schematic designs, architectural plans, and budgets to serve project fundraising and a road-map for implementation.

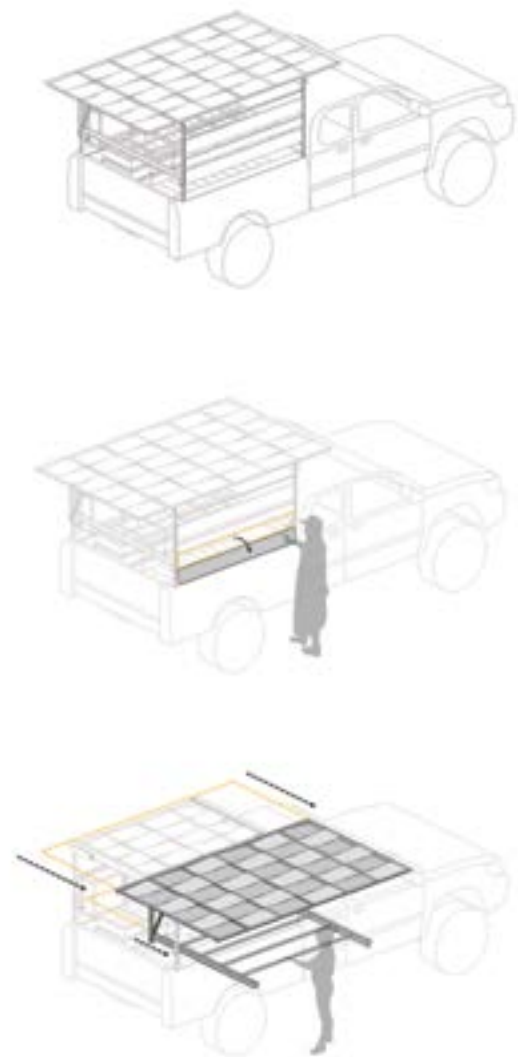
TEAM Marianne Desmarais (Design Lead), Nick Jenisch (Project Manager) Lolade Frankel, Lindsay Girardeau, Maggie Hansen, Sue Mobley, Emilie Taylor Welty, Donn Peabody

SPECIAL THANKS Johnson Controls, Inc.





Michael Wong



MOBILE MARKET Set up of the Mobile Market from its truck bed (near left, top to bottom), and a customer choosing produce (far left)



VISION HOUSE Axonometric drawing highlights client and staff spaces (above) and a rendering of the Healing Garden (right)



MOBILE MARKET Student models exploring flexible spaces and structures

The Year in Numbers

In 2015, Small Center outlined a 5-year strategic plan with the aim of building on our history of thoughtful design work in service to our home city, New Orleans. The strategic plan set clear targets for measuring our impact and success at addressing the technical needs of our partner organizations, the learning objectives of our students, and the long-term sustainability of our program. Since then, we have hit many significant milestones. Thanks to an endowed gift from our long-time supporters, “Sonny” and Tina Small, we are now named the Albert and Tina Small Center for Collaborative Design.

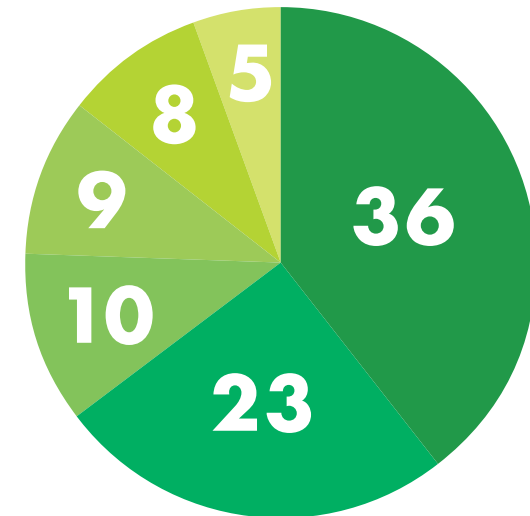
We assembled our first Advisory Council and a Faculty Advisory Group, who are helping us to identify opportunities for support and partnership, outside and inside the University.

This year’s Request for Proposals yielded 23 submissions from nonprofit groups across New Orleans. It is clear that there is still a tremendous need in our city for the work that we do. We are grateful to our supporters who make it possible for us to offer technical assistance while training the next generation of citizen architects. Together we will create a city shaped by its citizens.

COURSES OFFERED

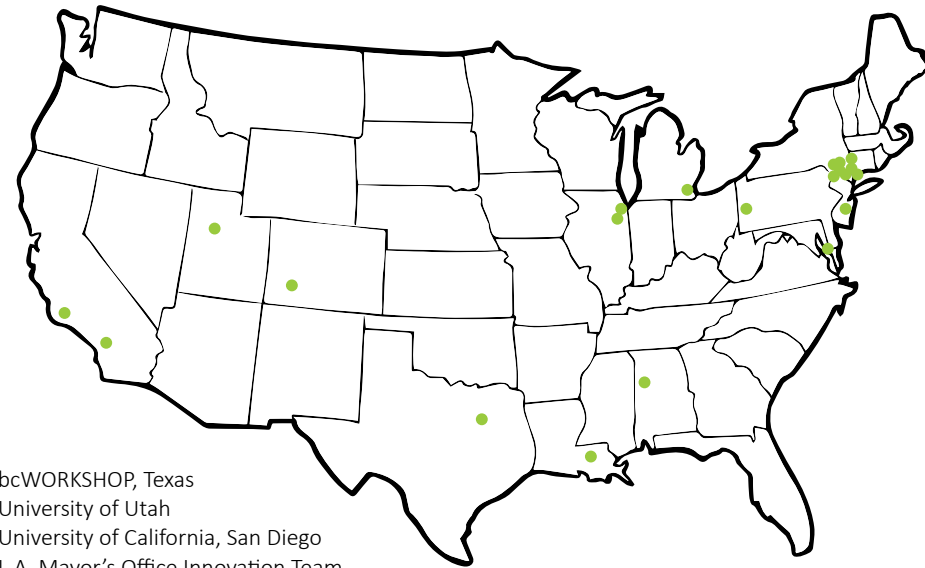
Spring 2016 Public Interest Design Seminar
 Spring 2016 Community Book Center Design Build
 Fall 2015 Fabrication / Tech Elective
 Fall 2015 Sankofa Mobile Market Design Build

STUDENTS ENGAGED



- Students enrolled in Small Center courses
- Students enrolled in MSRED courses
- Graduate Research Assistants
- Work-study students
- Summer 2016 Public Interest Design Fellows
- Summer 2015 Public Interest Design Fellows

PEER PROGRAM EXCHANGE



bcWORKSHOP, Texas
 University of Utah
 University of California, San Diego
 L.A. Mayor's Office Innovation Team
 University of Denver
 Rural Studio, Auburn University
 Hunter College, CUNY
 Princeton-Mellon Initiative
 Archeworks, Chicago
 Urban Network, University of Chicago
 Detroit Community Design Center
 Design Futures
 J. Max Bond Center, City College of New York
 Graduate School of Architecture, Columbia University

Center for Urban Pedagogy, New York
 Georgetown University, Washington D.C.
 New Jersey Institute of Technology
 Hester Street Collaborative, New York
 University of Toronto, Canada (not pictured)
 University of Halifax, Canada (not pictured)
 Center for Urban Science & Progress, NYU
 Coastal Sustainability Studio, LSU, Baton Rouge

PALMYRA 2739 WITH JANE PLACE

#1 Palmyra 2739 is the first and only **permanently affordable** apartment building in New Orleans.

Small Center's research and design work with Jane Place Neighborhood Sustainability Initiative helped make the case to funders and developers for the community land trust model of shared equity and land stewardship.

PARISITE SKATEPARK WITH TRANSITIONAL SPACES

\$210,000

Amount raised by Transitional Spaces using Small Center's design for the **first official skatepark** in New Orleans.

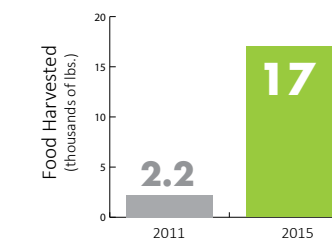
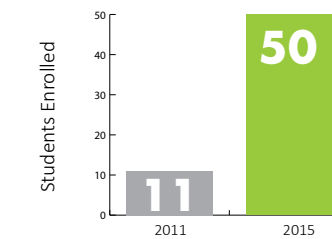
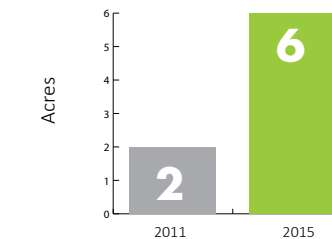
Transitional Spaces and Small Center developed a phased master plan for the skatepark and Small Center designed and built the entryway, featuring rainwater collecting gardens, benches, bike racks, and signage.

“You want a facility kids use?
 Have them design it with you.
”

— Skylar Fein, artist + skate advocate,
 at the ribbon cutting to Parisite

GROW DAT YOUTH FARM

Small Center worked with Grow Dat Youth Farm to incubate a student leadership and urban farming program, and designed and built a sustainable 4-acre campus. Work was completed in 2013. Since then, the program has continued to grow, and is a nationally recognized model of youth empowerment:



FAÇADE RENEW

\$2M

Façade ReNEW's investment in revitalizing historic corridors

34 Applicants approved for funding by the NORA board.

17 Projects completed, with eight more currently under construction.

Small Center also worked with NORA to develop the framework for the 2-year pilot of Façade ReNEW and provided technical assistance for applicants. The pilot offered grants to storefronts on 3 corridors: Oretha Castle Haley Boulevard, St. Claude Avenue, and Bayou Road.

Small Center worked with 2 nonprofits to develop Placemaking proposals as another component of the program: Hayden Plaza (with OCHMBA) and Alcee Fortier Blvd (with MQVCDC). Both of these applications have been approved for funding by the NORA board.

PROJECTS COMPLETED 2015–16

Design, Research, and Graphic Narratives Completed:

- City Park Camping
- Guide to Street Performance
- Mardi Gras Indian Council Institute
- Vision House
- Façade RENEW
- Heritage Garden, Hung Dao CDC
- Dew Drop Inn

Designs Constructed:

- APEX Youth Center Playspace
- Outdoor Environmental Classroom
- Greenline Water Pavilion
- Parasite Skate Park
- Mobile Market
- Community Book Center Renovation
- Central City Community Notice Board

CONFERENCE PRESENTATIONS

- American Institute of Graphic Arts, Fall 2015
- American Institute of Architects: Architecture in Education, Fall 2015
- ASHOKA Changemakers, Spring 2016
- Structures for Inclusion, Spring 2016
- Association of Collegiate Schools of Architecture: Natural, Spring 2016
- Design Futures, Summer 2016

AFFILIATIONS

- American Society of Landscape Architects
- American Institute of Architects
- American Institute of Certified Planners
- American Institute of Graphic Arts
- Parasite Design Advisory Board
- Bryan Bell Metropolitan Leadership Forum
- Design Futures
- Water Collaborative Designer/Builder Committee
- Regional Transit Authority Advisory
- Tulane's Center for Public Service Executive Committee
- Greater New Orleans Housing Alliance

PUBLICATIONS

Conjunctions: Transdisciplinary Journal of Cultural Participation – Recovery to Resilience: Finding a transdisciplinary approach to community-based design

ACSA National Conference Presentation – Designers, Citizens, and Citizen-Designers; charting new modes of engagement, collaboration, and project outcomes at the Tulane City Center

AWARDS

- SEED 2016 – Parasite Skatepark
- AIA Gulf States Award of Merit 2016 – LOOP Pavilion
- Ashoka Cordes Award 2016



COMMUNITY BOOK CENTER RENOVATION
The display area of Community Books,
designed and built by students in Spring 2016

RECENT ARTICLES, PRESS, AND BOOKS

- 2015**
- AIA Architect** | Resilience by Design
 - The Guardian** | 10 years after the storm: has New Orleans learned the lessons of Hurricane Katrina?
 - National Public Radio: Morning Edition** | After Katrina, Tulane's Architecture School Became A Community Builder
 - Higher Education Today** | Reinventing a Program, Revitalizing a City at Tulane's School of Architecture
 - Vice** | How Katrina Sparked a Black Skateboarding Renaissance in New Orleans
 - The Atlantic: Citylab** | A Place for the Mardi Gras Indians
 - AIGA: Eye on Design** | Design as a Change Agent: New Orleans 10 Years Later
 - Non-Profit Quarterly** | Creating 'Permanently Affordable' Rental Housing in New Orleans
 - WGNO** | First Public Skate Park Comes to Gentilly
 - Antigravity Magazine** | Parisite Ushers in a New Era of NOLA Skate Culture
 - WWLTV** | New Orleans Opens First Official Skatepark in Gentilly Neighborhood
 - Times-Picayune** | \$350,000 Skateboard Park, 'The Parisite,' Opens in Gentilly
 - The New Orleans Advocate** | Check It Out: New Orleans Opens Parisite Skate Park – the First Public Skate Park in City's History
 - WWLTV** | Mayor Landrieu Opens New Orleans' First Public Skate Park
 - Gambit** | Parisite Skate Park Officially Opens in New Orleans
 - AIALA** | Youth Farm Design Proves Effective in Both Savings and Uniting Community
 - The New Orleans Advocate** | Algiers Vietnamese community planning neighborhood park
 - Times-Picayune** | A Tribute to the Big Chief: Donald Harrison Sr.'s Family Turn Their Yard into a Mardi Gras Cultural Center
- 2016**
- Gamble, David and Patty Heyda** | Chapter | Rebuilding the American City: Design and Strategy for the 21st Century Urban Core
 - Gentilly Messenger** | Bastion Community of Resilience leads nation with new veteran housing and service model
 - WGNO** | Housing and wellness center for veterans, families under construction in Gentilly
 - FOX8** | New community will give veterans in need of rehabilitation a place to call home
 - The Gambit** | Affordable Housing Exhibit pops up at Tulane City Center





GROUPS HOSTED

UrbanBuild • Masters of Sustainable Real Estate Development • Masters of Preservation Studies • Tulane Center for Public Service • Taylor • Center for Engaged Learning and Teaching • Neighborhood Partnerships Network • Tulane University Masters of City Culture Communities • Cowen Institute • Music and Culture Coalition of New Orleans • The Data Center • Newcomb Art Gallery • AmeriCorps VISTA • Citizens' Diplomacy Council • Alliance for Citizen Engagement • Committee for a Better New Orleans • Oretha Castle Haley Boulevard Merchants and Business Association • New Orleans Redevelopment Authority • The Loeb Fellowship Alumni • American Institute of Architects • Van Alen Institute, Future Grounds competition • PlayBuild NOLA • National Organization of Minority Architects • Greater New Orleans Water Collaborative

TOURS OF PROJECTS

- Wheeler Kearns Firm, Chicago, Illinois
- University of Virginia Architecture Students
- University of Utah Studio Class, Salt Lake City
- Rural Studio Staff Retreat, Newbern, AL
- University of Halifax Design Build Class, Canada
- University of Manitoba Studio Class, Canada

RED BEANS ROUNDTABLE SPEAKERS

- **Barbara Lacen-Keller**, Director of Constituent Services for City Council Member Stacey Head
- **Justin Nystrom**, Assistant Professor of History, Loyola University New Orleans
- **Sharlene Sinegal DeCuir**, Assistant Professor of History, Xavier University
- **Casius Pealer**, Director, Tulane Master's in Sustainable Real Estate Development program
- **Kristin Gisleson Palmer**, Founder, The Gisleson Group
- **Rachel Diresto**, Executive Vice President, Center for Planning Excellence
- **Lacy Strohschein**, Senior Policy and Development Associate, Greater New Orleans Inc.
- **John Cummings**, Founder and owner, Whitney Plantation Museum
- **Ibrahima Seck**, Lead researcher, Whitney Plantation Museum
- **Brandan B-mike Odums**, Artist, activist, owner 2-Cent productions
- **Erin Greenwald**, Historian, Historic New Orleans Collection
- **Richard Campanella**, Associate Professor, Tulane School of Architecture
- **Aron Chang**, Architect, Waggoner and Ball Architects
- **Maggie Hansen**, landscape designer and Director, Small Center at Tulane School of Architecture
- **Renee Corrigan**, Education Coordinator, Greater New Orleans Fair Housing Action Center
- **Alex Vialou**, Senior Business Analyst, New Orleans Redevelopment Authority
- **Maxwell Ciardullo**, Policy Analyst, Greater New Orleans Fair Housing Action Center
- **David Finger**, Interim Associate Director of the Loyola University New Orleans Law Clinic
- **Pres Kabacoff**, Founder, HRI Properties
- **Shana griffin**, Board Chair, Jane Place Neighborhood Sustainability Initiative
- **Michael Robinson**, Neighborhood Coordinator, Jericho Road Episcopal Housing
- **Ethan Ellestad**, Executive Director, Music and Culture Coalition of New Orleans
- **Asali Ecclesiastes**, Claiborne Corridor Program Manager, The Network for Economic Opportunity
- **Jeffrey Goodman**, Urban Planner, Miller Urban Consulting

Upcoming Events

EXHIBITS / WORKSHOPS / CELEBRATIONS

- September 12th: Opening Reception – The Cost of Home: Local Models and National Policy for Affordability
- October 27th: Affordable Housing and Zoning Toolkit with Center for Urban Pedagogy
- December 14th: Design Build studio celebration – Ozanam Inn Day Space
- May 3rd, 2017: Design Build studio celebration – Big Class Writer's Room at Sylvania Williams College Prep

RED BEANS ROUNDTABLES

Red Beans Roundtables are casual conversations. Small Center provides red beans and rice from Café Reconcile and great panels of speakers who have unique insights into the big issues facing New Orleans. We ask our panelists and all participants to bring their questions, experiences, and appetites to 1725 Baronne Street so we can all learn and teach together.

Fall Roundtables
September 12th • October 10th • December 12th

Spring Roundtables
February 13th • March 13th • April 17th • May 15th

Please check our website, small.tulane.edu, for more information.

2016 SUMMER PID FELLOWSHIP Fellows' sketchbooks (this page) and Design Build Manager Emilie Taylor Welty on a 2016 PID Summer Fellowship field trip to Gulf Coast Community Design Center (back cover)

Thank You!

SUPPORTERS

Albert Jr & Tina Small • Anonymous • Ellen & Mac Ball • David & Stephanie Barksdale • Patti Harp & Michael Bernstein • Maziar Behrooz • Andy Byrnes • Marjorie & Scott Cowen • Cara & Alvin Cox • Theresa Denard & Steven Reider • Michelle & Robert Diener • H. Mortimer Favrot, Jr. • Katrina & Steven Gewirz • Mr. & Mrs. (Erin) Jean Paul Hymel • Brad Hastings • Judith Kinnard & Kenneth Schwartz • Jeanne & Michael Klein • John & Anne Mullen • Cathy & Hunter Pierson • Gina & Lorne Rosenfield • Cameron & Paul Richard • The Sizeler Family • John & Laura Williams • Ray Woolridge

The Azby Fund • Blue Moon Foundation • The Brees Dream Foundation • The Community Foundation of the Chattahoochee Valley • The Environmental Grantmakers Association • Foundation for Louisiana • Louisiana Endowment for the Humanities • National Endowment for the Arts • National Trust for Historic Preservation • The Construction Zone • New Orleans Food and Farm Network • Surdna Foundation • Transforma Projects • Tulane School of Architecture • Tulane/Xavier Center for BioEnvironmental Research • Waggoner & Ball Architects • Johnson Controls, Inc. • Dash Lumber • Enterprise Holdings Foundation • John C. Williams Architects • Eschew+Dumez+Ripple • Cox, Allen and Associates Architects

FOUNDING SUPPORTERS

Albert & Tina Small • Ray Woolridge • Tulane School of Architecture • Tulane/Xavier Center for BioEnvironmental Research

Special thanks to Joy Willig and Elizabeth Rodriguez for researching economic impact, and to Shoshana Gordon for designing this publication.

TEAM

Maggie Hansen, Director
Donn Peabody, Operations Coordinator
Shoshana Gordon, Program Assistant / AmeriCorps VISTA
Emilie Taylor Welty, Design Build Manager
Sue Mobley, Public Program Manager
Nick Jenisch, Project Manager

ADVISORY COUNCIL

Mary Landrieu • Albert "Sonny" Small, Jr. • Dan Pitera • Liz Ogbu • Jean Paul Hymel • Judith Kinnard • Kim Boyle • Lisa Roy

FACULTY ADVISORY GROUP

Doug Harmon • Tom Holloman • Judith Kinnard • Cordula Roser Gray • John Klingman • Wendy Redfield • Carol Reese • Joy Willig

For a complete list of students and faculty who have collaborated with Small Center, please visit small.tulane.edu.

Our past team members include:

Alan Lewis, Founding Director (2005–2006)
Dan Etheridge, Founding Assistant Director (2005–2013)
Scott D. Bernhard, Director (2006–2012)
Maurice Cox, Director (2012–2014)
Olivia Stinson, Senior Program Coordinator (2006)
Alison Popper, Graphic Designer (2009–2010)
Carey Clouse, Project Manager (2011–2012)
Dozenia Marshall, Accountant (2011–2015)
Jenga Mwendo, Engagement Coordinator (2013–2014)
John Coyle, AmeriCorps VISTA (2015–2016)

